

Current Projects 2013

www.devensec.com

www.ecostardevens.com





Recently completed: US Army/National Guard T&M Facility

- ~59,000 sq.ft. training building
- ~59,000 sq.ft. OMS
- ~91,000 sq.ft. CSMS
- Various Storage Buildings
- USGBC LEED Silver
- Reduced Impervious (120,000 sf.)
- Building Reuse 41,000 sq.ft.
- Water Resource Protection



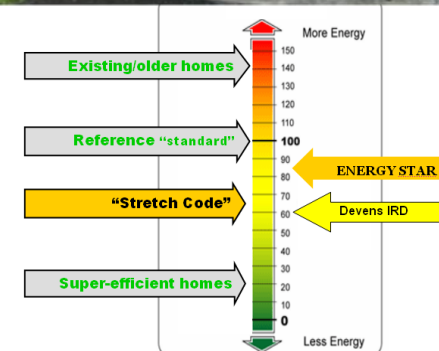


Recently completed: Devens Sustainable Housing

- Energy Efficient and Affordability
- 8 Single Family/12 Multi-Family
- Single family HERS 8 to -36 (enough excess to run EV 30,000/year – carbon neutral living)
- Multi Family HERS 40
- LOW VOC paints, sealants/coatings.
- Solar PV and net metering
- LID (porous walkways, roof runoff infiltration and rain gardens)

ENERGY-POSITIVE HOMES

IN DEVENS, MASS





Devens Sustainable Housing cont...

Key EE Building Features:

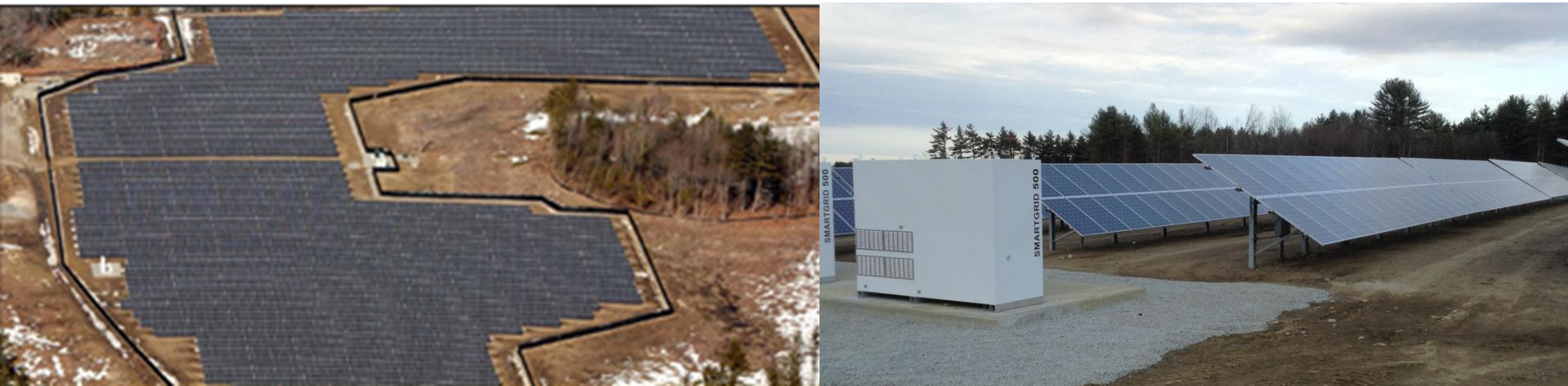
- east-west axis- p. solar & nat. light.
- Super-insulated 12 inch thick walls
- Triple-pane glass windows
- Air sealing to reduce gaps/leakage
- Fresh air systems/ heat exchangers
- Water and electric saving fixtures.





Recently Completed: Citizens Energy Solar Farm

- 28 acres in EBZ - 3MW ground-mounted solar - 12,090 panels
- Supplying the Devens grid with clean, renewable energy.
- 1,964,308 Kwh in first 6 months (3.07% of Devens energy use)
- avoiding 1,451 tons of carbon emissions or 213,529 gallons of gas
- NHESP, Vernal Pools, USFWS, OSR, Archeological
- Low-impact use & perm protection of balance lands





Recently Completed: Nashoba Valley Regional E-911 Dispatch Center

- 270 Barnum Road
- Devens FD & MA State Police
- Lunenburg, Lancaster, Harvard & Devens
- Adaptive building reuse
- Shared services
- Regional cooperation
- Contact info:

Main: 978-772-1900

Direct: 978-772-1998





Currently Under Construction: New England Studios

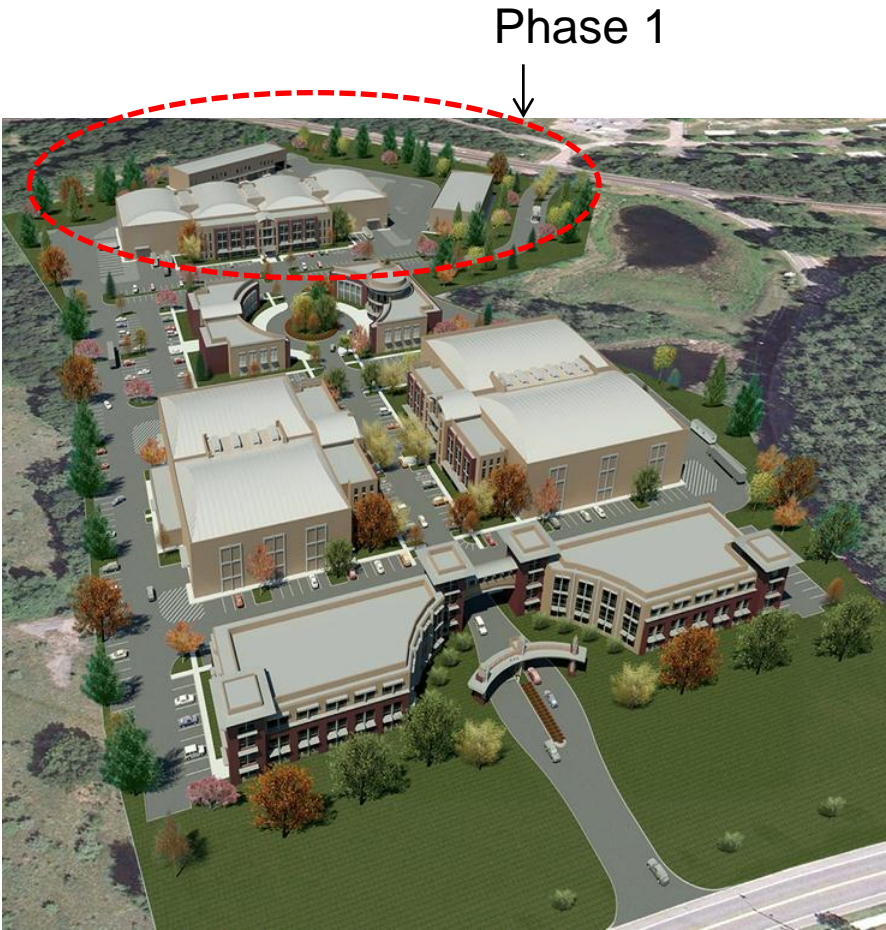
- 126,000 sq.ft. of buildings on ~16 Ac.
- 30 FT employees; 110 per sound stage during production (up to 470 total).
- LID, Carpool, EV charging, Ped.





New England Studios cont....

- Already expanding (2nd Mill Bldg.)
- Phasing Potential to more than double project size.
- Scheduled opening 9/15





Recently Permitted

JP Sullivan

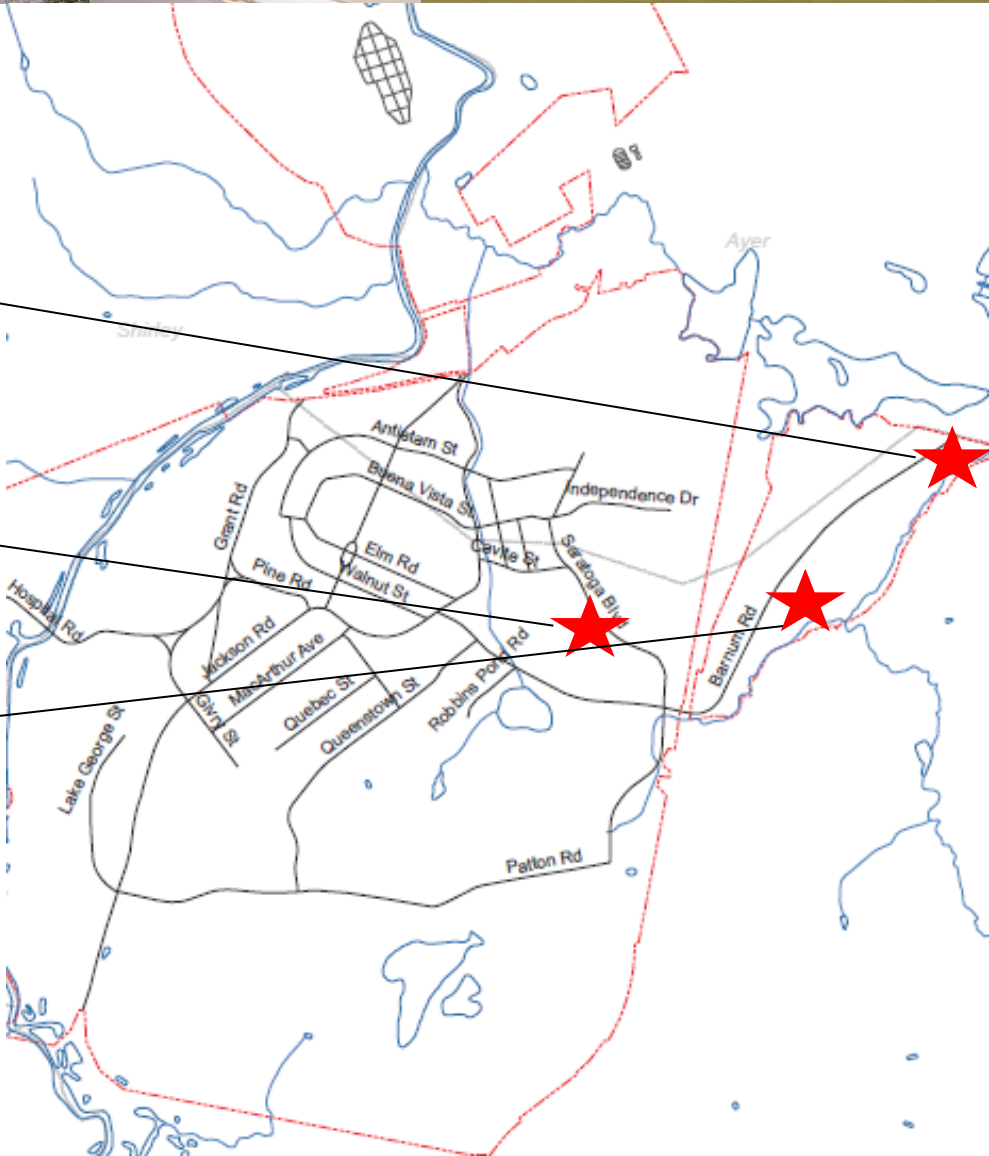
- 1.2 acre apple crate storage
- Expansion of Ayer business

Columbia Tech

- Large systems and Machinery
- Expansion from Worcester

Saint Gobain

- Former EGS Property
- LED Lighting Components





Projects in Development

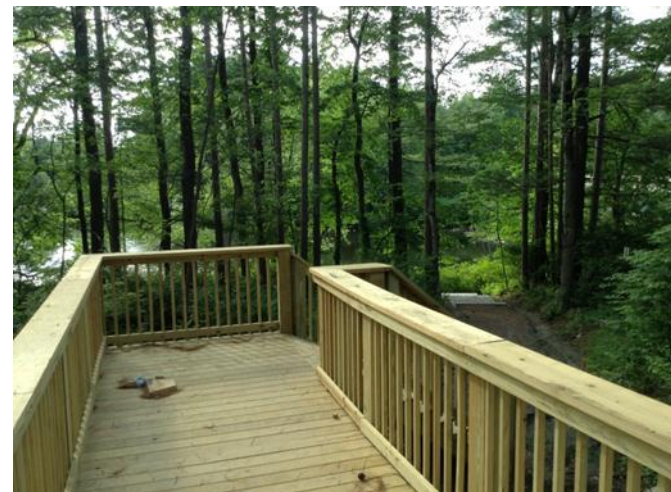
- **BMS** 200,000 sqft. process development and clinical man.
- **15 Independence Drive – O'Reilly Auto Parts** regional distribution center
- **18 independence** : minor exterior modifications to accommodate a new user.
- **Lot 6B Barnum Road - Maxant Industries:** honey processing equipment manufacturing.
- **Lot 1C Barnum Road – 80,000 sq.ft.** Devens “Flex” Center multi-tenant office/warehousing/light manufacturing space.
- **Hornet Field Stormwater Pond – Sherman/Antietam:** municipal stormwater
- **Jackson Road Phase IV:** Verbeck Gate to Barnum Road.





US Fish and Wildlife Visitor Contact Station

- Parking and meeting pavilion
- Restroom facilities
- Outdoor Education
- Connection to Oxbow NWR and Devens trail system
- Amphitheater
- Canoe launch and parking
- River/Wildlife viewing Platform





US Fish and Wildlife Visitor Contact Station cont...

Showcase for sustainable development:

- LID stormwater and roofs
- Porous pavement
- Composting toilets
- Material Reuse – reclaimed barn siding
- Sight line improvements for river access parking area





Cavite Street Park

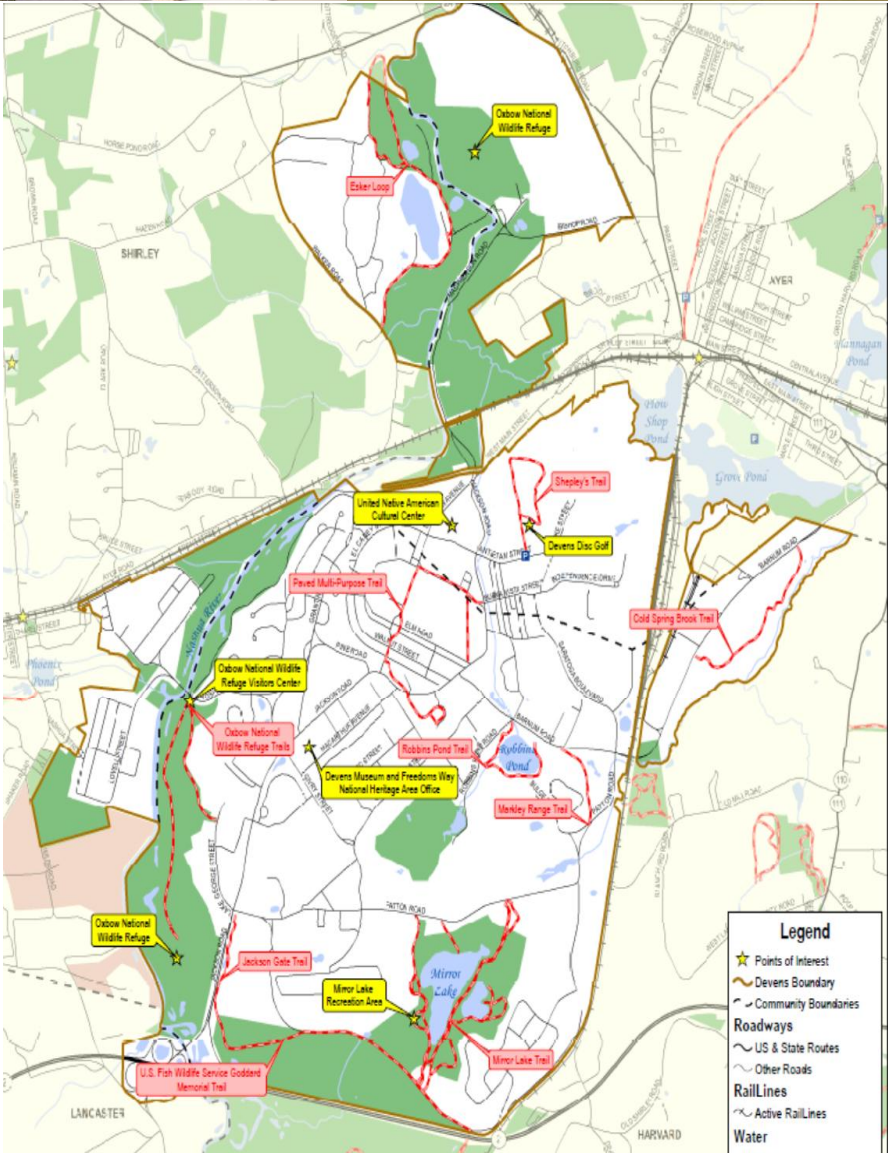
- Pocket park at Bates & Cavite
- stonedust path, rain gardens and benches
- Location close to the existing residences
- Directly across from the Transitions and between Net-Zero energy single family and multi-family homes





Devens Trails

- Updating mapping – local/reg.
- USFWS connections
- MassDevelopment kiosks
- information on trails and how they connect
- Points of interest (Cultural and recreational)
- Devens Open Space and Recreation Plan
- Connecting people with the nature - encourage active and healthy living.





Devens Disc Golf

- Existing 18 hole course on Shepley's Hill
- Recent approval for additional 18 holes (only one in New England)
- Low-impact
- Vernal Pools
- Expanded recreational offerings





Permanent Protection of important ecological systems:

- North Post EBZ (130ac.)
- Robbins Pond (59ac.)
- ASP Bog (59ac.)
- Cold Spring Brook (18ac.)
- Mirror Lake and Esker expansion (21ac.)
- Shepley's Hill (45ac.) – pending
- over 300 ac. + additional 150+ in the works

