

Current Projects May 2014

www.devensec.com

www.ecostardevens.com





Recently completed: US Army/National Guard Groundwater Monitoring Program

- ~210,000 sq.ft. of new LEED Silver buildings on Barnum Road completed in 2012.
- DEC required groundwater protection measures due to high pollutant load potential (LUHPPL)
- Zone 1 signage - installed in 2013.
- GW Monitoring wells (4) installed in May 2014.
- Annual monitoring program in place.





A photograph of a modern university building with a large glass entrance and a blue awning. The building is white with blue accents. There are flags on poles to the left of the entrance. The sky is clear and blue.



2012 (former 2014) 1st housing area)



Recently Completed: New England Studios

- 126,000 sq.ft. of buildings on ~16 Ac.
- 2nd mill building completed
- Incorporated Low-Impact Development, electric vehicle charging stations, pedestrian connections.





Recently Completed: JP Sullivan Apple Crate Storage

- Two acre outdoor apple crate storage area adjacent to existing J.P. Sullivan facility in Ayer.
- Buffer of existing vegetation between Cold Spring Brook and storage area.
- Landscape screening on berms completed in May and all exposed areas hydroseeded.





Recently Completed: Cavite/Adams Sidewalk

- 5' concrete sidewalks
- final part of the eight lot zero net energy subdivision.
- Future connection to Jackson Road Devens trail systems and commercial/retail center.





Recently Completed: Jackson Road Bike Lanes

- first dedicated bike lanes in Devens along the majority of Jackson Road from Patton Road to the Verbeck Gate.
- Both dedicated bike lane locations as well as shared bike and motor vehicle lanes.
- Provides increased safety and awareness, promotes alternative transportation, carbon reduction and helps facilitate more active lifestyles (public health).



Dedicated Bike Lane

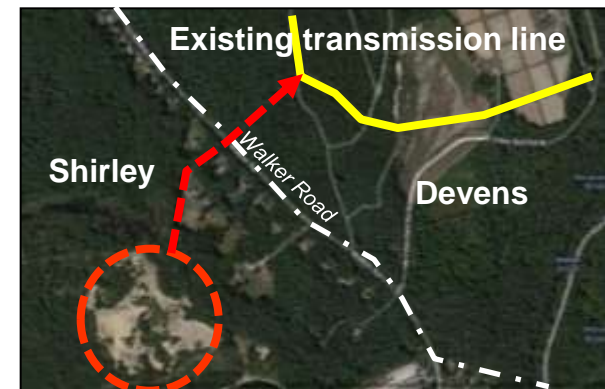


Shared Roadway (bike and car)



Recently Completed: Devens Utilities – Shirley 3.7 MW Ground-Mounted Solar Farm: Devens Interconnect

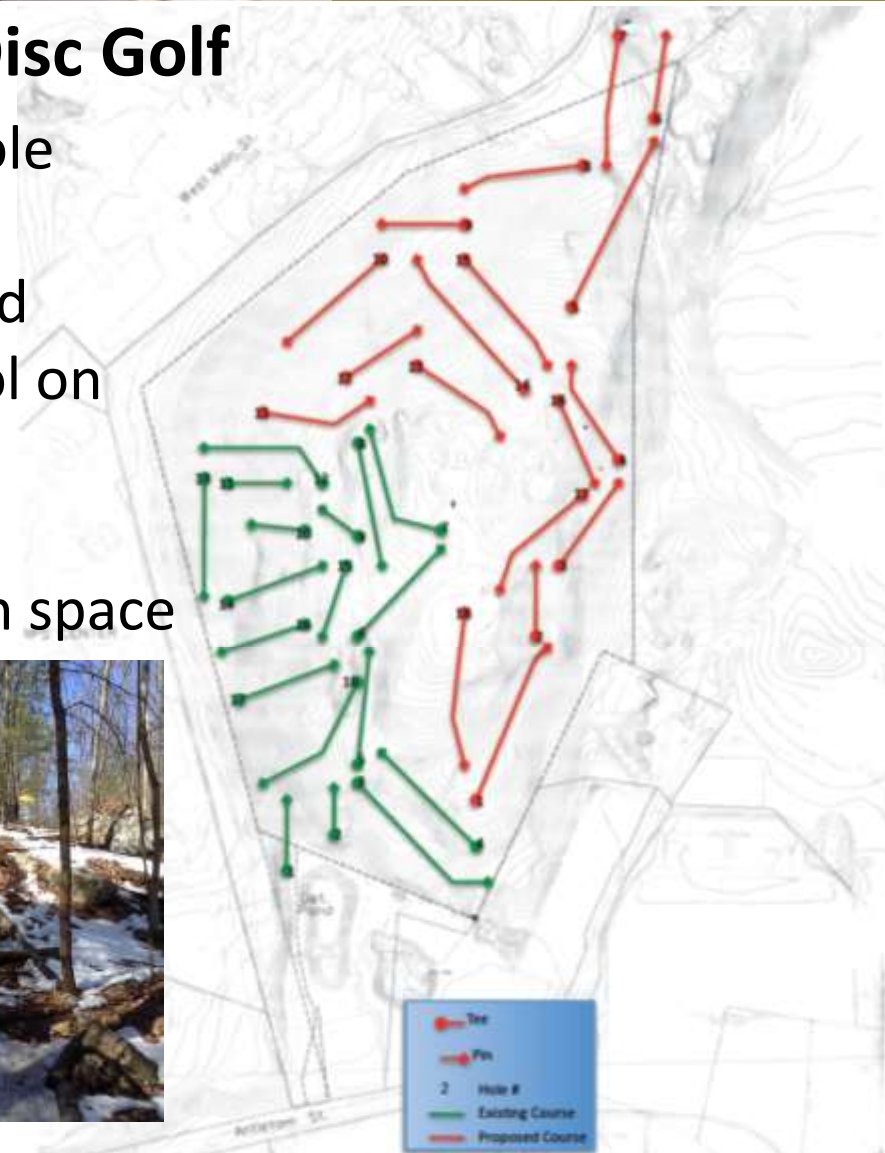
- 12,830 photovoltaic (PV) solar panels on 23 acres of Shirley Water District land
- 4,800 MWh of electricity/year to Devens Utilities (enough electricity to power 630 homes every year).
- Above-ground transmission line through a portion of the North Post – connecting into the same line that services the 3MW solar farm in Devens.
- Facility is expected to be commissioned and operational by end of June, 2014.





Recently Completed: Devens Disc Golf

- 18 hole expansion of existing 18 hole course on Shepley's Hill
- Only 36 hole course in New England
- Working with Parker Charter School on Vernal Pool education signage
- Expanded recreational offerings
- 45 ac. permanently protected open space





Currently Under Construction: USFWS Visitor Contact Sta.

- Parking and meeting pavilion
- Restroom facilities
- Outdoor Education
- Connection to Oxbow NWR and Devens trail system
- Amphitheater
- Canoe launch and parking
- River/Wildlife viewing Platform





US Fish and Wildlife Visitor Contact Station cont...

Showcase for sustainable development:

- LID stormwater and roofs
- Porous pavement
- Composting toilets
- Material Reuse – reclaimed barn siding
- Sight line improvements for river access parking area





Currently Under Construction: Nypro Healthcare

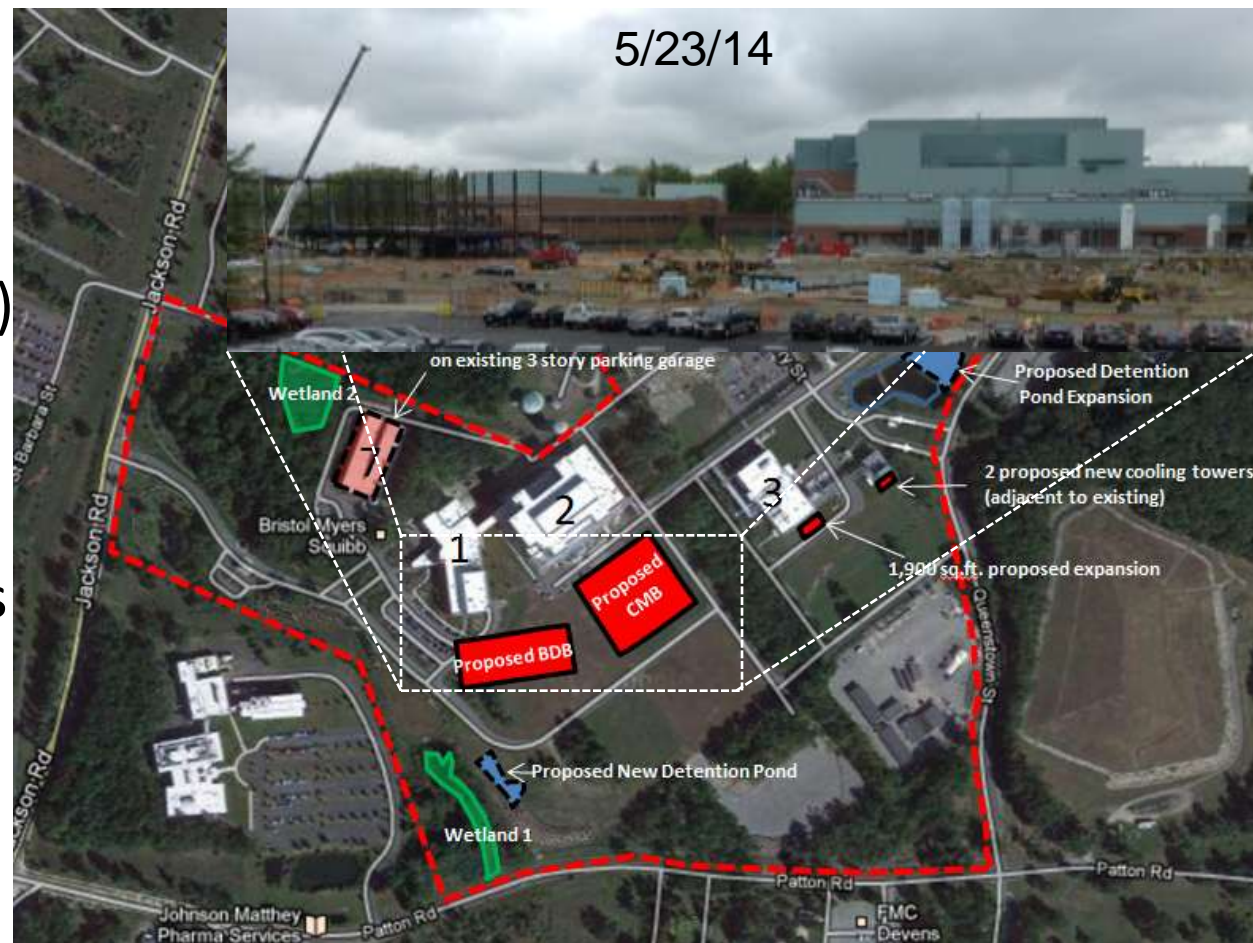
- Expanded into a portion of the building at 112 Barnum Road.
- Manufactures precision plastic products for healthcare, packaging and consumer electronics.
- Redesigning and reconfiguring the building's high-capacity mechanical and electrical systems.
- 165 new jobs.





Currently Under Construction: BMS (38 Jackson Rd.)

- 231,000 sf Biologics Development Building (BDB)
- 131,500 sf Clinical Man. Building (CMB)
- New space for developing and manufacturing biotechnology drugs for clinical trials.
- 350 to 380 new employees.





Currently Under Construction: Applewild Daycare

- Pre-school and kindergarten based in Fitchburg.
- Satellite location in Devens offering high quality pre-school and kindergarten programs available to local business, industry and residents
- Approximately 50 students, with daytime and afterschool programs.



Proposed playground area at One Jackson Place



ADA Accessible ramp and parking under construction



Currently Under Construction: Ozark Automotive

- Renovation of the former +/-370,500 sq.ft. Kraft/Veryfine building to accommodate O'Reilly Auto Parts New England Distribution center.
- The facility will service 50-60 stores.
- Renovated facility expected to have 80-90 employees over 2 shifts to start.
- Developing a groundwater quality monitoring program to comply with the Zone 2 Water Resources Protection District requirements.





Currently Under Construction: Maxant Industries

- Recently approved +/-28,600 sq.ft. building on a 3.2 acre undeveloped parcel off of Barnum Road.
- Facility to manufacture honey processing equipment.
- Project also includes a 8'x 20' seasonal apiary (for beehives) in the rear yard of the property.
- Expected to employ up to 13 people.





Currently Under Construction: 94-100 Jackson Rd.

- Elimination of parking spaces and addition of landscape islands to bring parking lot into compliance with DEC Regulations
- Addition of handicap ramp to comply with ADA requirements



New interior parking lot landscape Islands



Elimination of pavement along Jackson Road to provide increased landscape buffer



Handicap access ramp into 94 Jackson

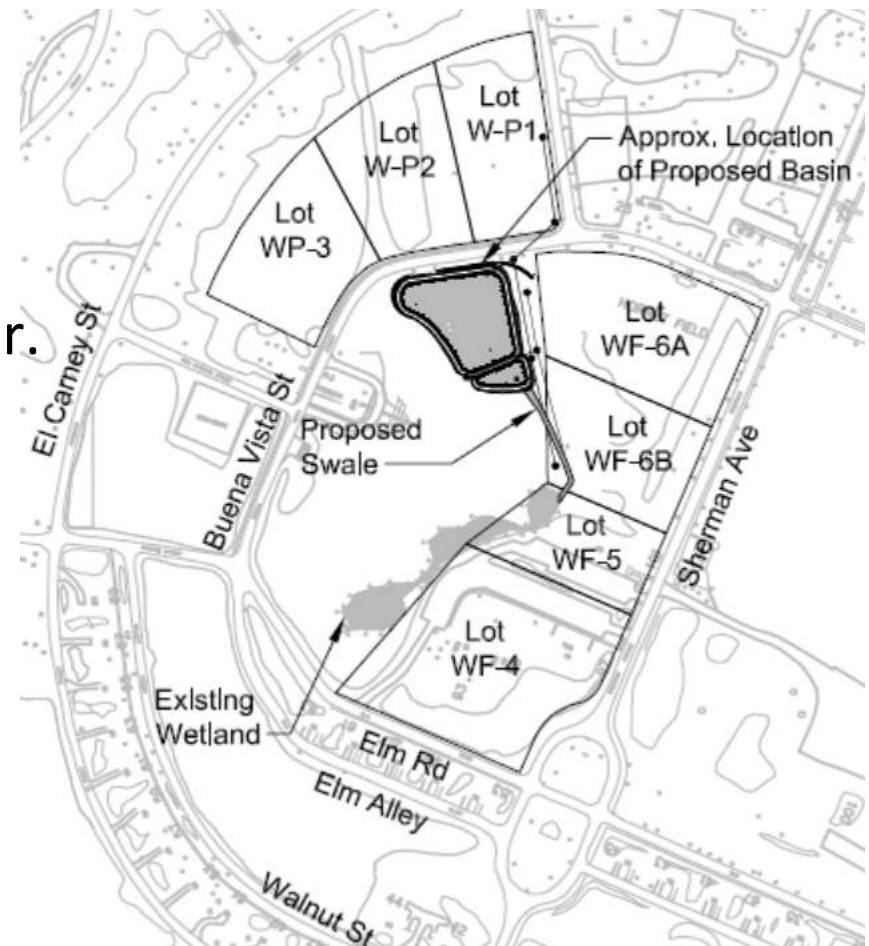


Currently Under Construction: Hornet Field SWM Pond

- Sherman/Antietam municipal stormwater pond for existing roadways and proposed development parcels in the Innovation and Technology Center.



Survey layout of proposed basin area in existing field.





Currently Under Construction: Devens Trail Head Kiosks

- MassDevelopment trail head kiosks:
 1. Robbins Pond;
 2. Intersection of Jackson and Patton Road (stone dust trail leading to Goddard trail); Mirror Lake Parking area;
 3. Bob Eisengrien Community Center parking lot;
 4. Barnum Road (one at each end of the Cold Spring Brook trail).
- Information on trail types/connections
- Points of interest (cultural/ rec.)
- Connecting people with the nature - encourage active and healthy living.



Trail head kiosk installed at Robbins Pond



Projects in Development: Devens Grill Parking Lot Expansion

- Due to continued use of field area for overflow parking, DEC has requested owner to construct additional reserve parking. Original unified permit included additional parking at a future date.
- Will add 29 additional parking spaces and reduce the need for parking on grass areas.
- Work will include removal of Jackson Road curb cut (unsafe)





Projects in Development: Jackson Road Phase IV:

- MassDev. Proposing realignment of Jackson Road from the Verbeck Gate to Barnum Road, including daylighting of Willow Brook.
- Current one way portions will be become two way and Sherman Ave will be closed to make Jackson the main route.
- Project recently received a \$1.85 million grant from the Federal EDA
- Project is expected to come before the Commission for permitting in late summer/early fall.





Projects in Development: Hodges Theatre off of Givry Street

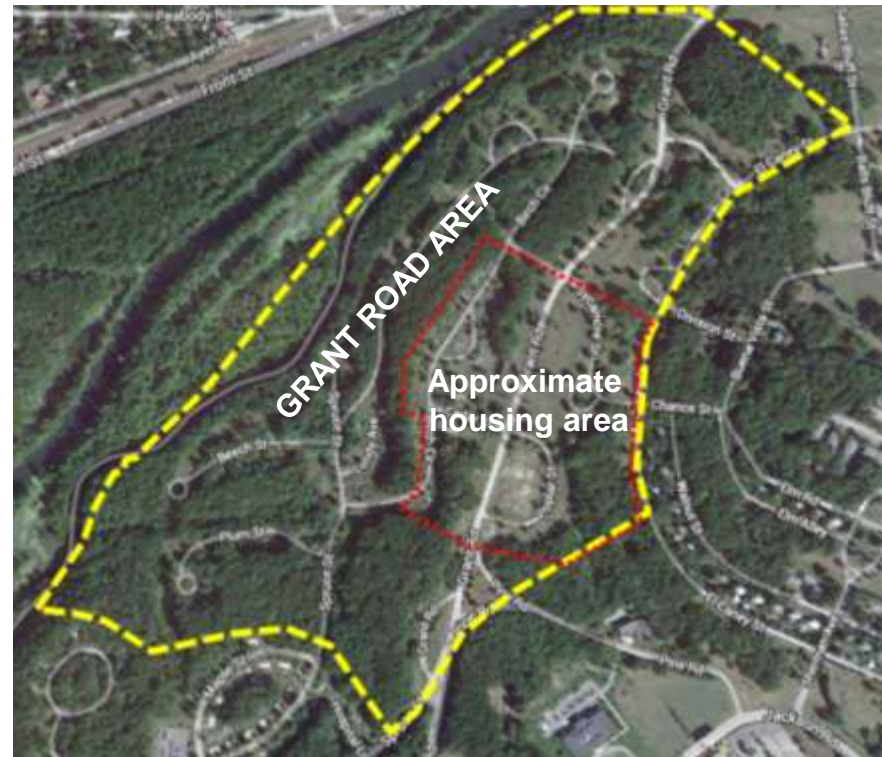
- Potential redevelopment as a mobile movie catering business (yellow area below).
- Supporting industry to the recently completed New England Studios Phase 1.





Projects in Development: Grant Road Housing

- Building off of the successes of the sustainable housing pilot program on Adams and Cavite, MassDevelopment is proposing up to 120 units of a mix of housing types and price ranges.
- An application could be before the Commission sometime this summer.





Permanent Protection of important ecological systems:

- Hospital Road and Lake George (30ac.) - complete
- Mirror Lake and Esker expansion (21ac.) - complete
- North Post EBZ (130ac.) - complete
- Shepley's Hill (45ac.) – complete
- Robbins Pond (59ac.) - complete
- Lower Cold Spring Brook (18ac.) - pending
- ASP Bog (59ac.) - complete

