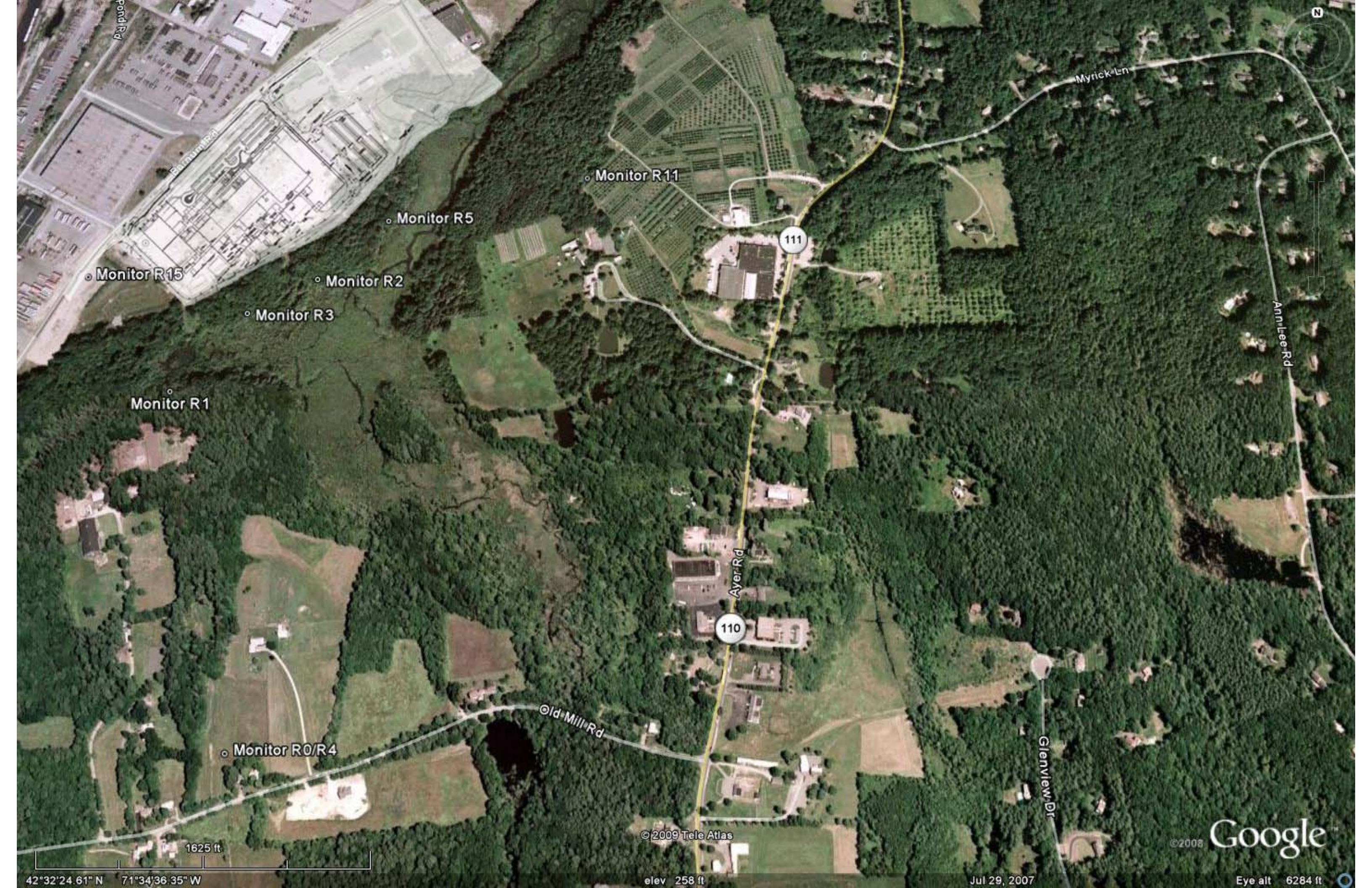


Progress Report

Evergreen Solar

July 28, 2009



N

Myrick Ln

Annlee Rd

111

110

Ayer Rd

Old Mill Rd

Glenview Dr

Monitor R11

Monitor R5

Monitor R2

Monitor R3

Monitor R1

Monitor R15

Monitor R0/R4

1625 ft

© 2009 Tele Atlas

© 2008

Google

42°32'24.61" N 71°34'36.35" W

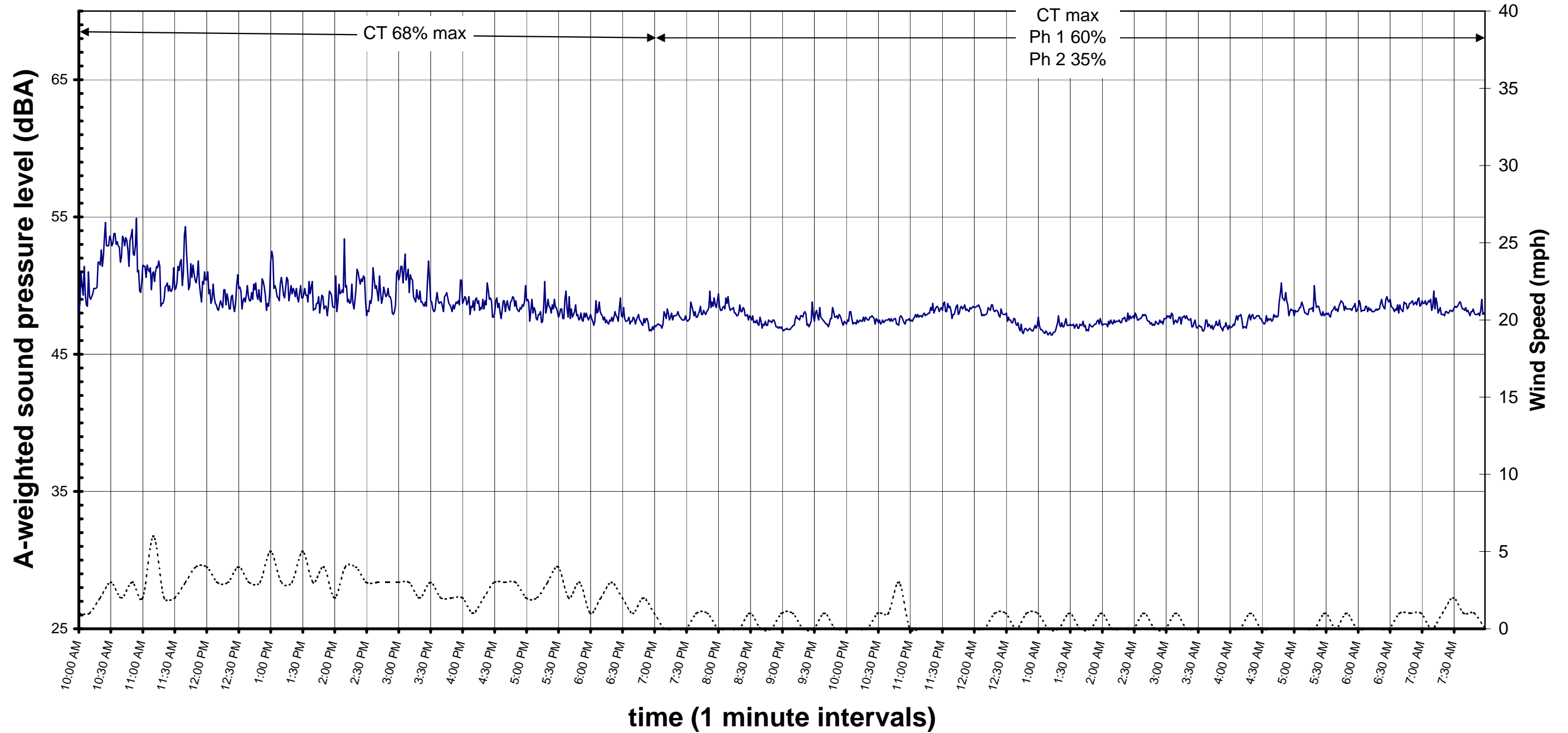
elev 258 ft

Jul 29, 2007

Eye alt 6284 ft

Evergreen Solar - A-weight sound pressure levels (L90)

July 15, 2009 - July 16, 2009



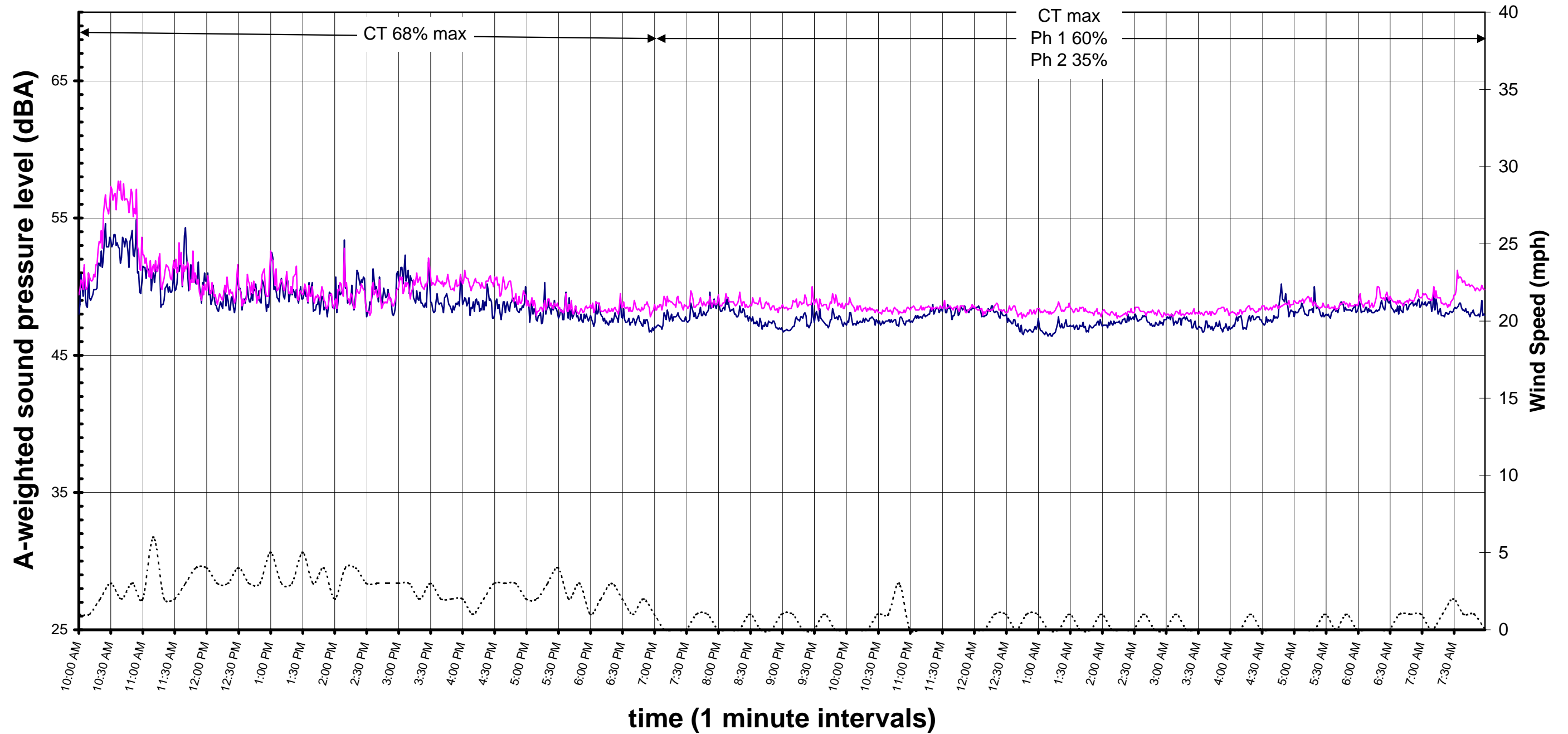
— R2 - Overlooking Cold Spring Creek, perpendicular to VOC equipment

- - - - - Wind Speed

● Precipitation

Evergreen Solar - A-weight sound pressure levels (L90)

July 15, 2009 - July 16, 2009



— R2 - Overlooking Cold Spring Creek, perpendicular to VOC equipment

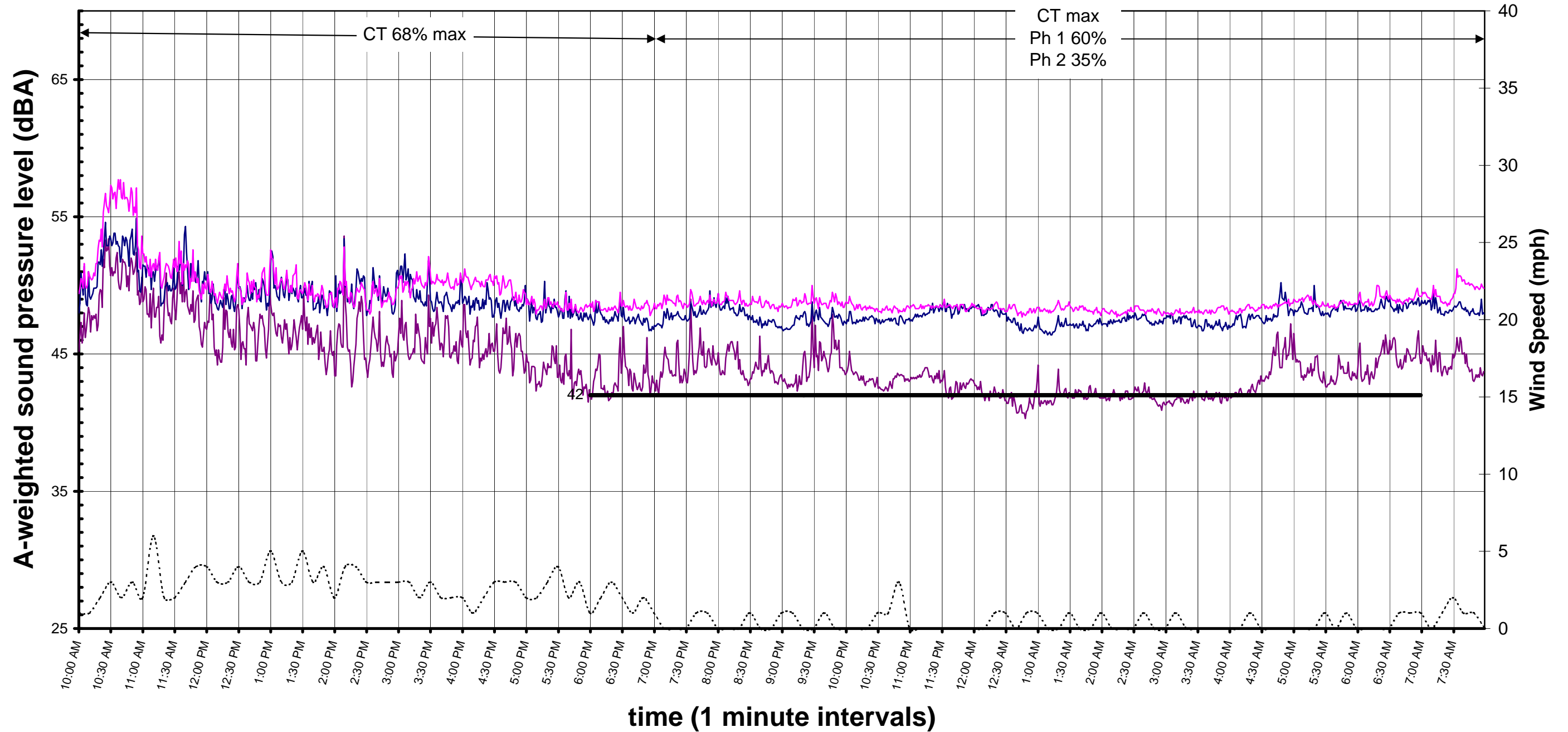
— R3 - Overlooking Cold Spring Creek, perpendicular to Cooling towers

- - - - - Wind Speed

• Precipitation

Evergreen Solar - A-weight sound pressure levels (L90)

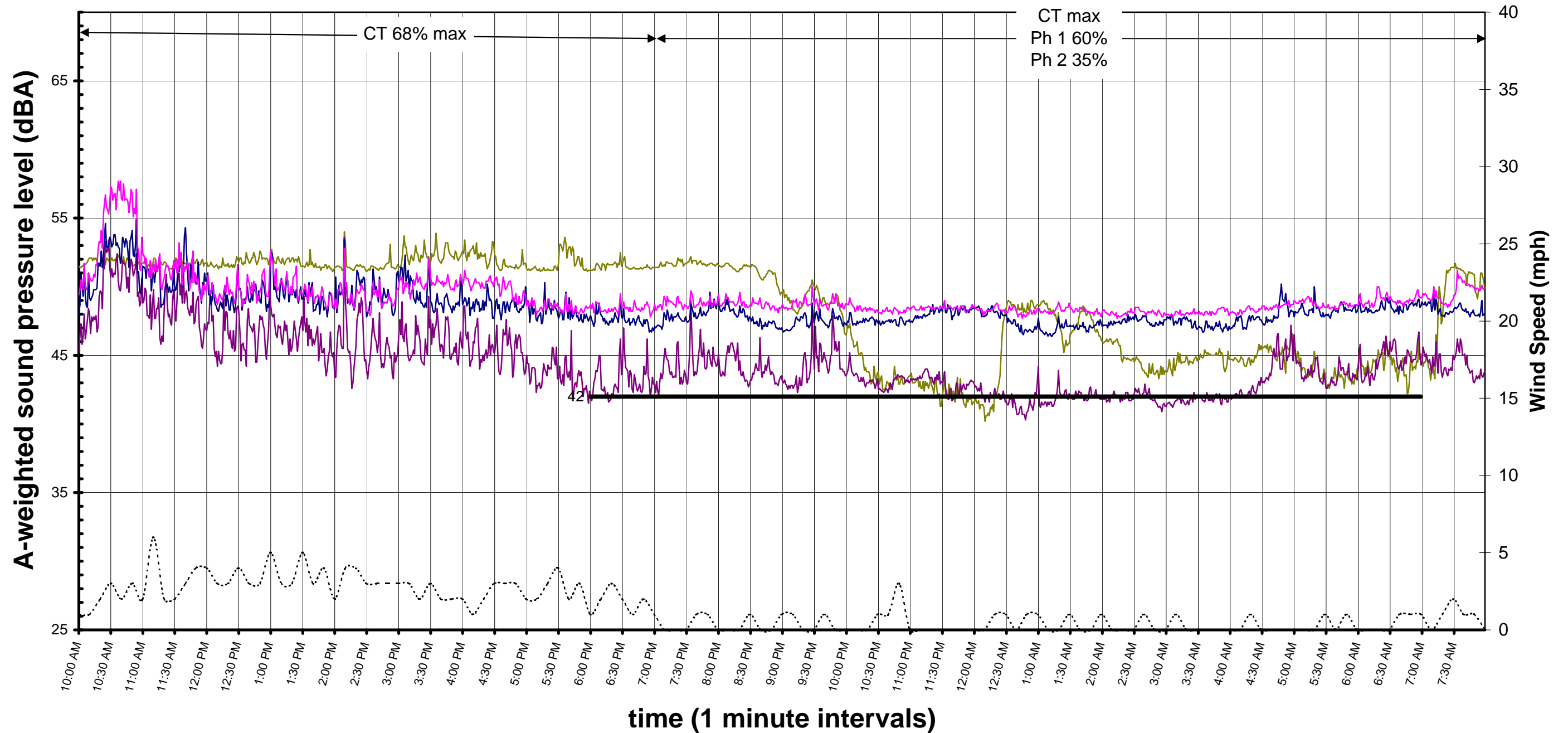
July 15, 2009 - July 16, 2009



- R1 - Behind back pasture (off riding trail, overlooking Cold Spring Creek)
- R2 - Overlooking Cold Spring Creek, perpendicular to VOC equipment
- R3 - Overlooking Cold Spring Creek, perpendicular to Cooling towers
- 42-dBA Criterion
- - - - - Wind Speed
- Precipitation

Evergreen Solar - A-weight sound pressure levels (L90)

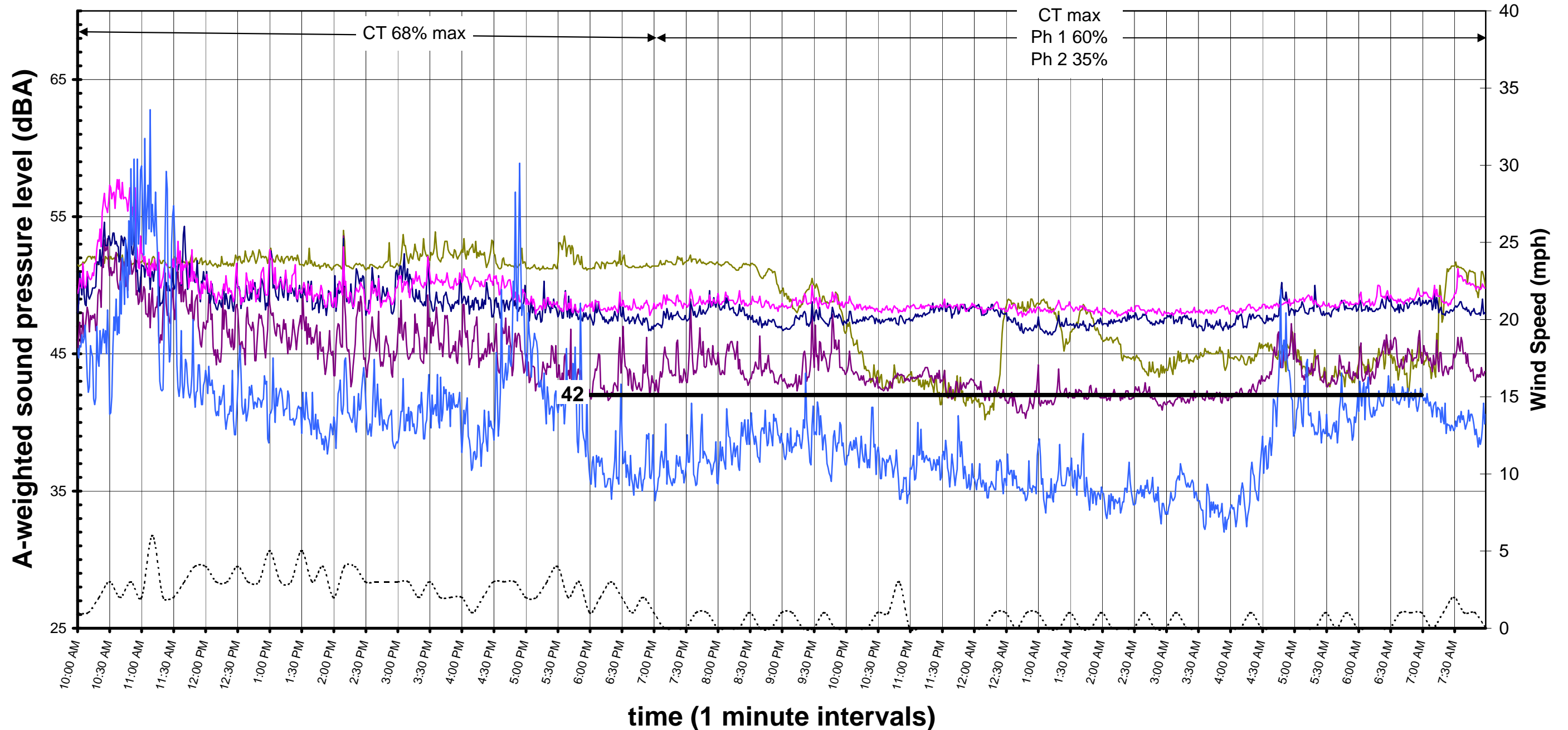
July 15, 2009 - July 16, 2009



- R0/R4 - 48 Old Mill Rd.
- R2 - Overlooking Cold Spring Creek, perpendicular to VOC equipment
- R1 - Behind back pasture (off riding trail, overlooking Cold Spring Creek)
- R3 - Overlooking Cold Spring Creek, perpendicular to Cooling towers
- 42-dBA Criterion
- Precipitation
- - - - - Wind Speed

Evergreen Solar - A-weight sound pressure levels (L90)

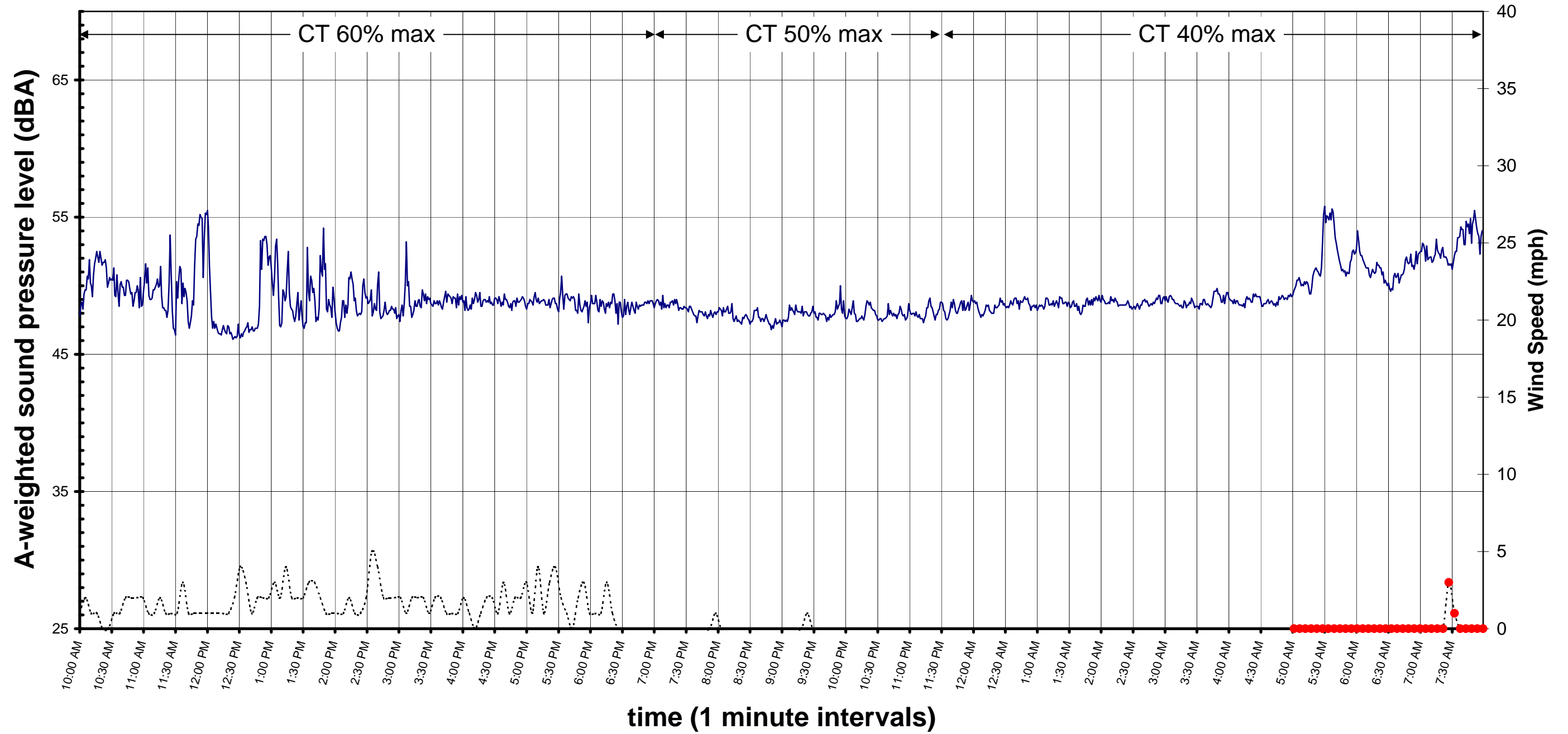
July 15, 2009 - July 16, 2009



- R0/R4 - 48 Old Mill Rd.
- R1 - Behind back pasture (off riding trail, overlooking Cold Spring Creek)
- R2 - Overlooking Cold Spring Creek, perpendicular to VOC equipment
- R3 - Overlooking Cold Spring Creek, perpendicular to Cooling towers
- R11 - Apple Orchard
- 42-dBA Criterion
- - - - Wind Speed
- Precipitation

Evergreen Solar - A-weight sound pressure levels (L90)

July 20, 2009 - July 21, 2009



— R2 - Overlooking Cold Spring Creek, perpendicular to VOC equipment

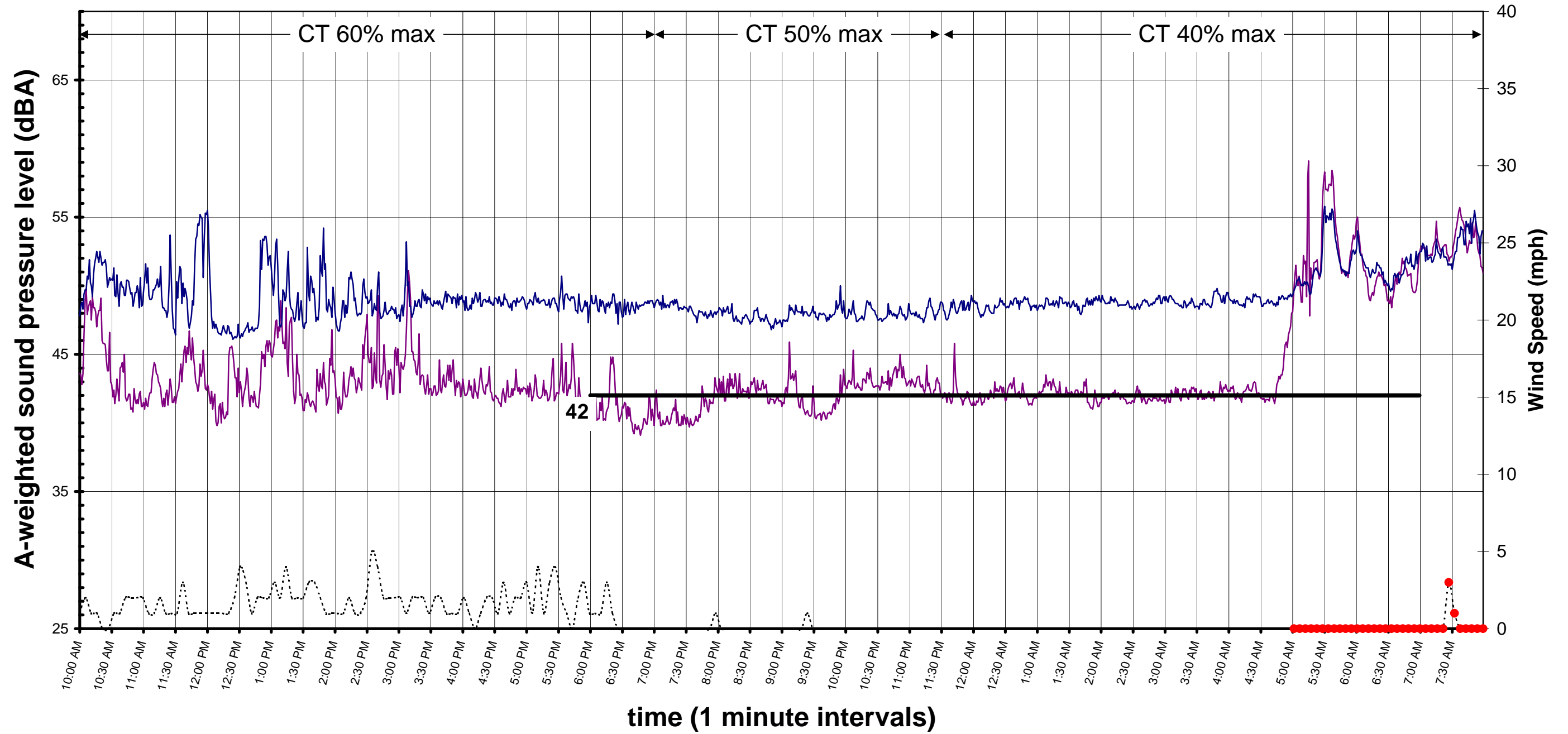
— R3 - Overlooking Cold Spring Creek, perpendicular to Cooling towers

----- Wind Speed

● Precipitation

Evergreen Solar - A-weight sound pressure levels (L90)

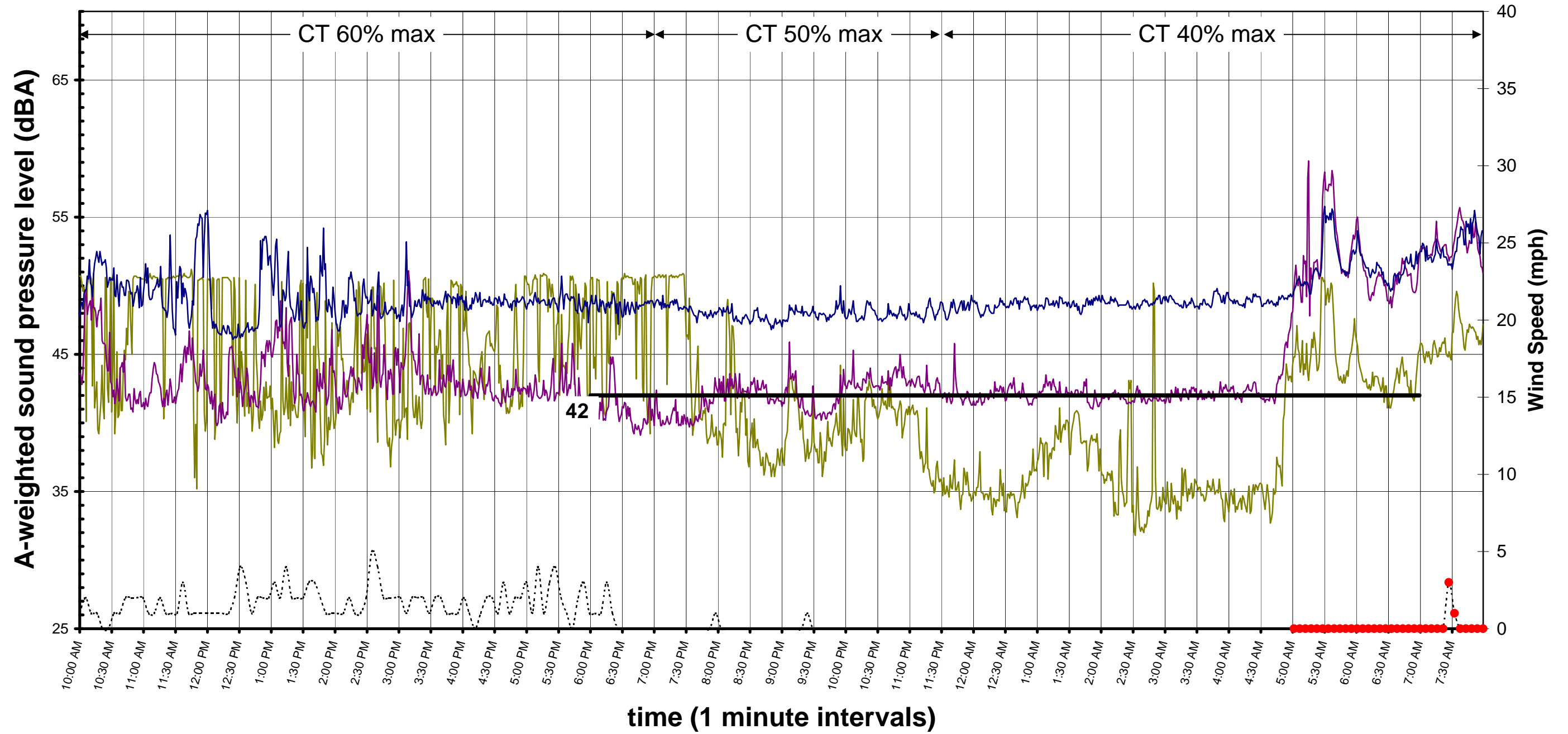
July 20, 2009 - July 21, 2009



- R1 - Behind back pasture (off riding trail, overlooking Cold Spring Creek)
- R2 - Overlooking Cold Spring Creek, perpendicular to VOC equipment
- R3 - Overlooking Cold Spring Creek, perpendicular to Cooling towers
- 42-dBA Criterion
- Wind Speed
- Precipitation

Evergreen Solar - A-weight sound pressure levels (L90)

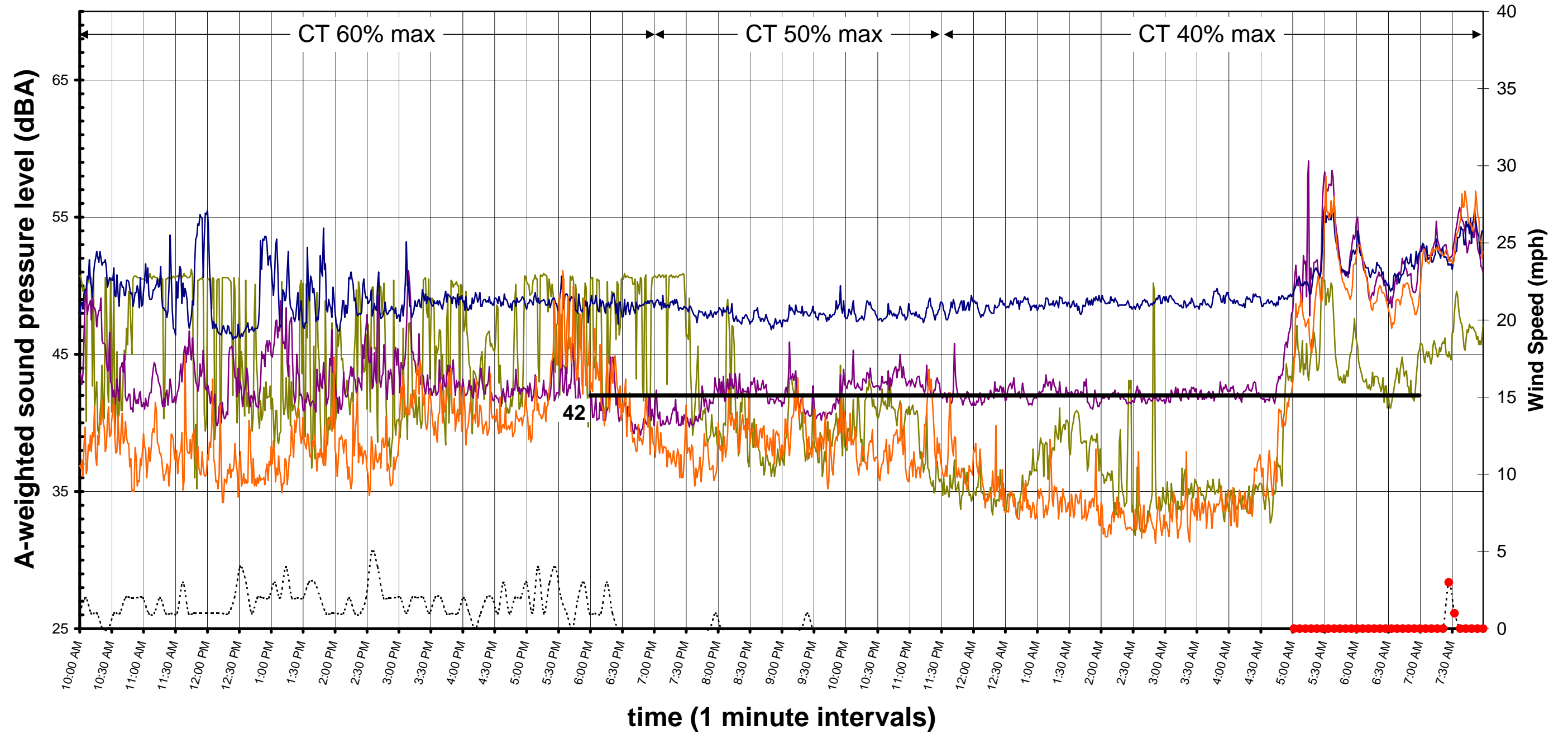
July 20, 2009 - July 21, 2009



- R0/R4 - 48 Old Mill Rd.
- R2 - Overlooking Cold Spring Creek, perpendicular to VOC equipment
- 42-dBA Criterion
- Precipitation
- R1 - Behind back pasture (off riding trail, overlooking Cold Spring Creek)
- R3 - Overlooking Cold Spring Creek, perpendicular to Cooling towers
- Wind Speed

Evergreen Solar - A-weight sound pressure levels (L90)

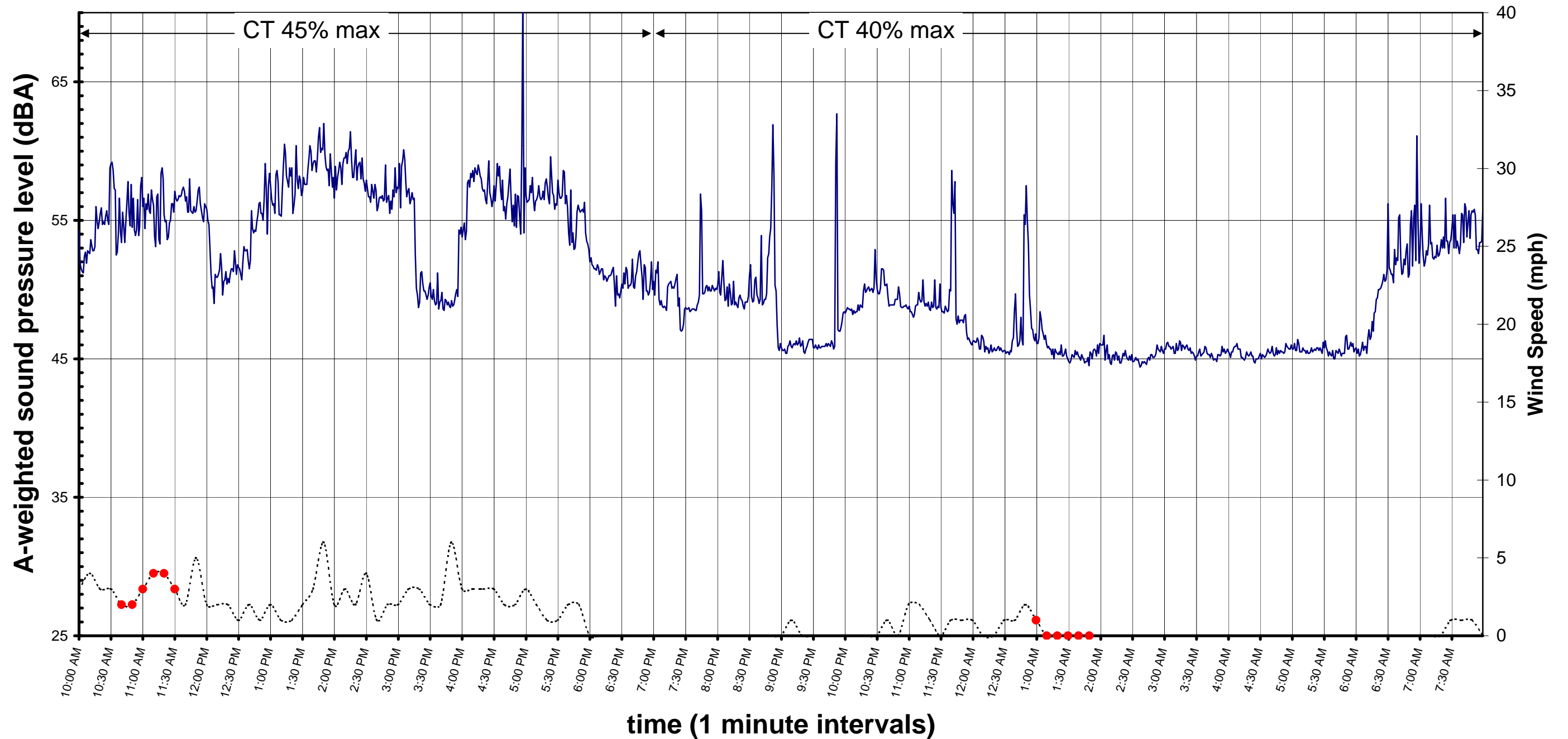
July 20, 2009 - July 21, 2009



- R0/R4 - 48 Old Mill Rd.
- R2 - Overlooking Cold Spring Creek, perpendicular to VOC equipment
- R11 - Apple Orchard
- Wind Speed
- R1 - Behind back pasture (off riding trail, overlooking Cold Spring Creek)
- R3 - Overlooking Cold Spring Creek, perpendicular to Cooling towers
- 42-dBA Criterion
- Precipitation

Evergreen Solar - A-weight sound pressure levels (L90)

July 24, 2009 - July 25, 2009



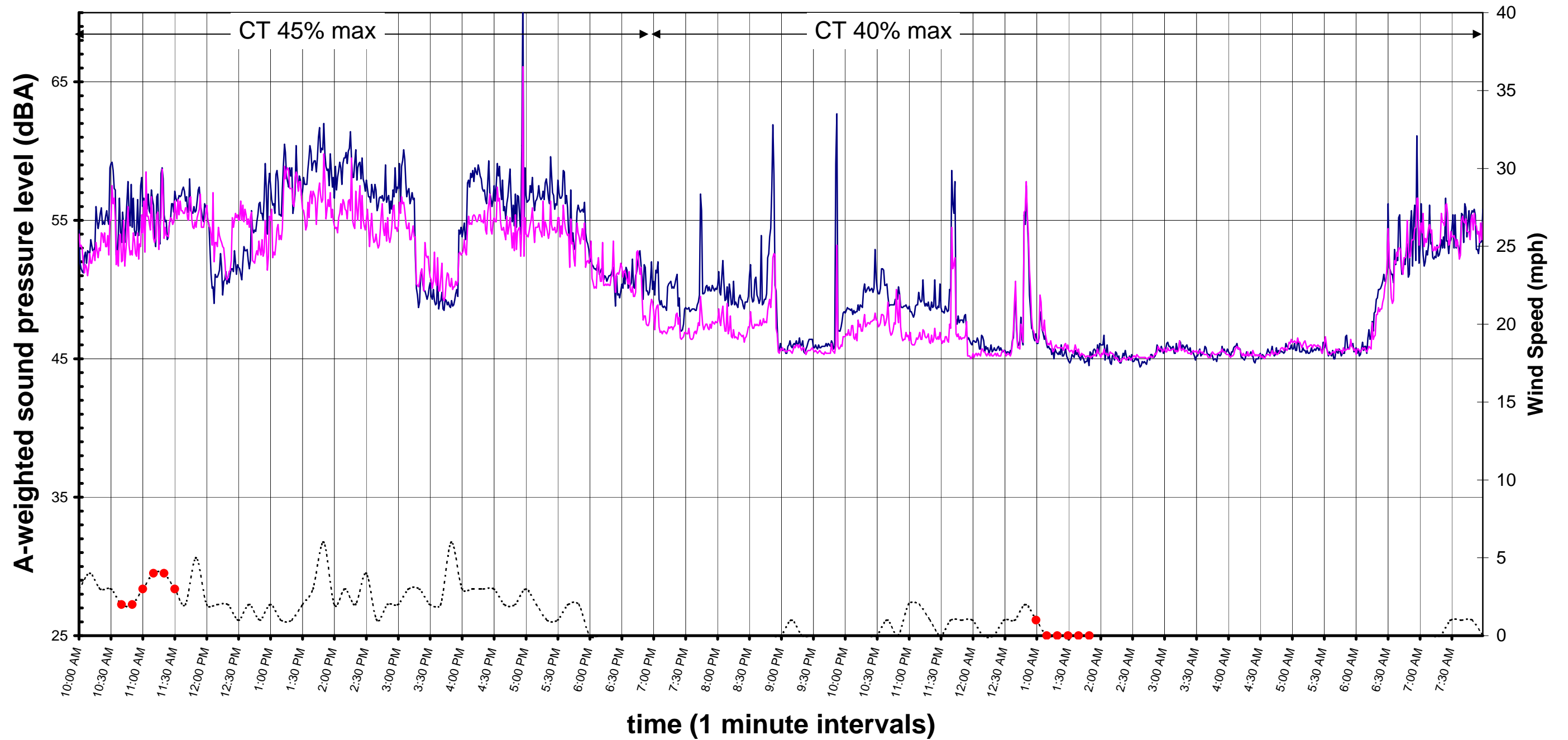
— R2 - Overlooking Cold Spring Creek, perpendicular to VOC equipment

- - - - - Wind Speed

• Precipitation

Evergreen Solar - A-weight sound pressure levels (L90)

July 24, 2009 - July 25, 2009



— R2 - Overlooking Cold Spring Creek, perpendicular to VOC equipment

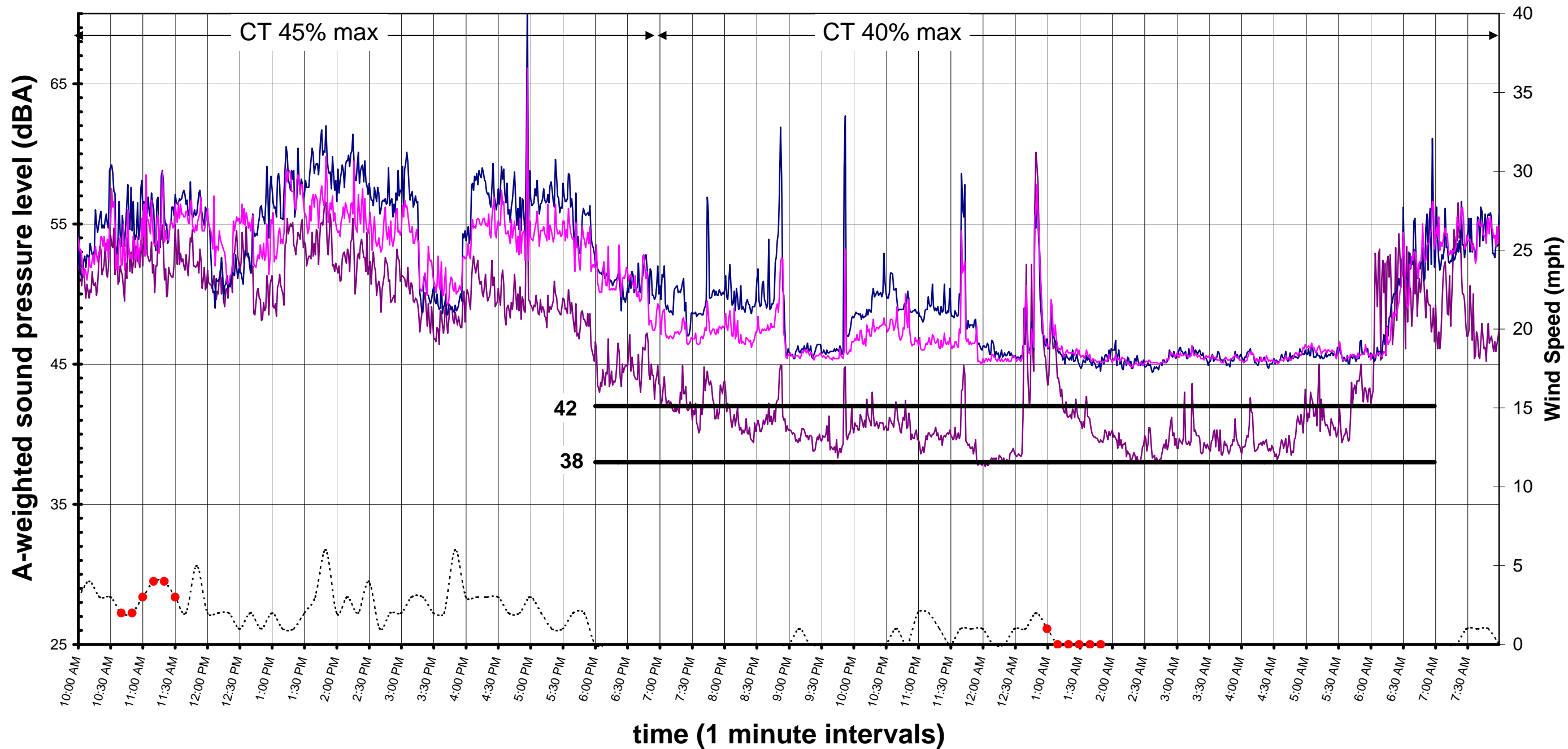
— R3 - Overlooking Cold Spring Creek, perpendicular to Cooling towers

- - - - - Wind Speed

● Precipitation

Evergreen Solar - A-weight sound pressure levels (L90)

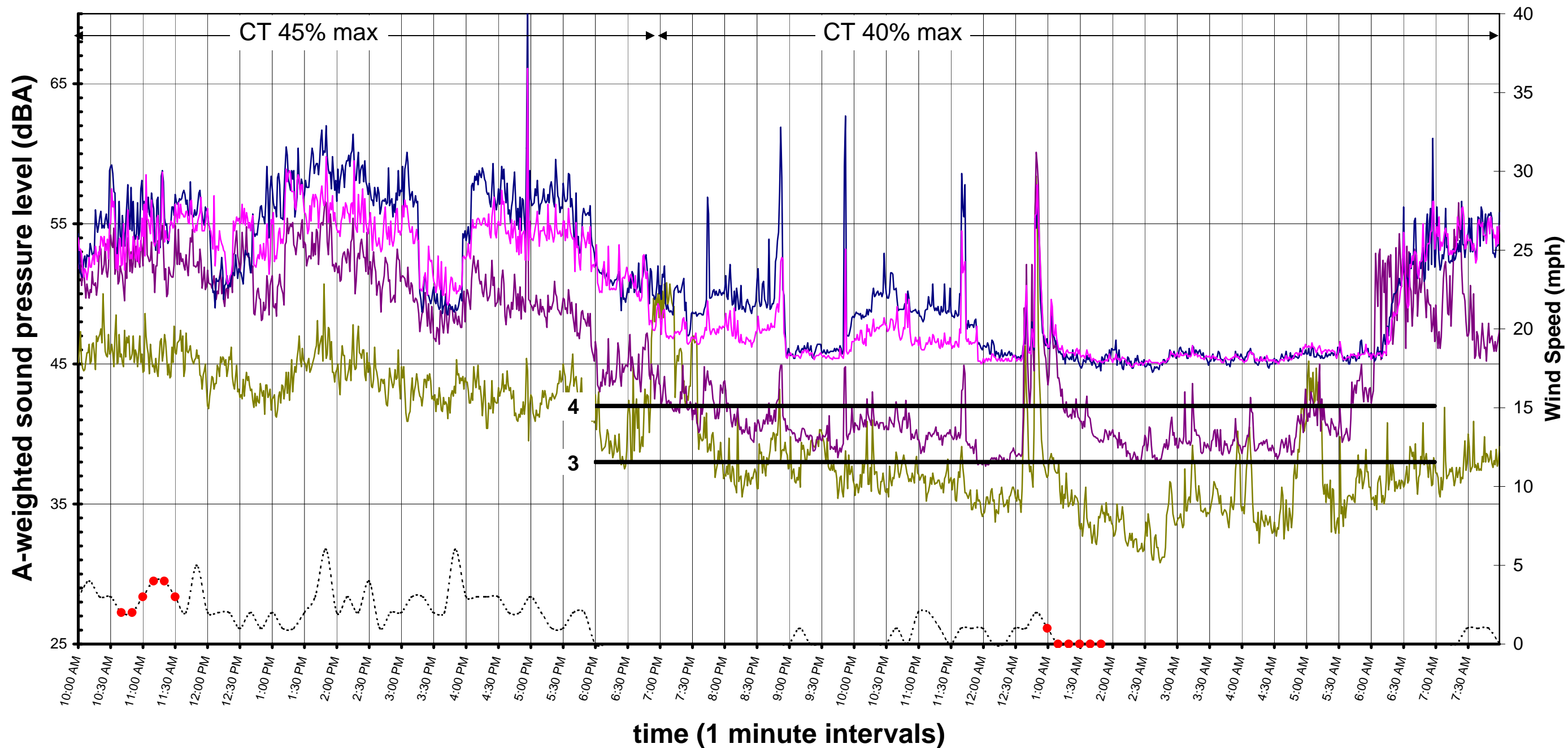
July 24, 2009 - July 25, 2009



- R1 - Behind back pasture (off riding trail, overlooking Cold Spring Creek)
- R2 - Overlooking Cold Spring Creek, perpendicular to VOC equipment
- R3 - Overlooking Cold Spring Creek, perpendicular to Cooling towers
- 42 dBA Criterion
- 38 dBA Criterion
- Wind Speed
- Precipitation

Evergreen Solar - A-weight sound pressure levels (L90)

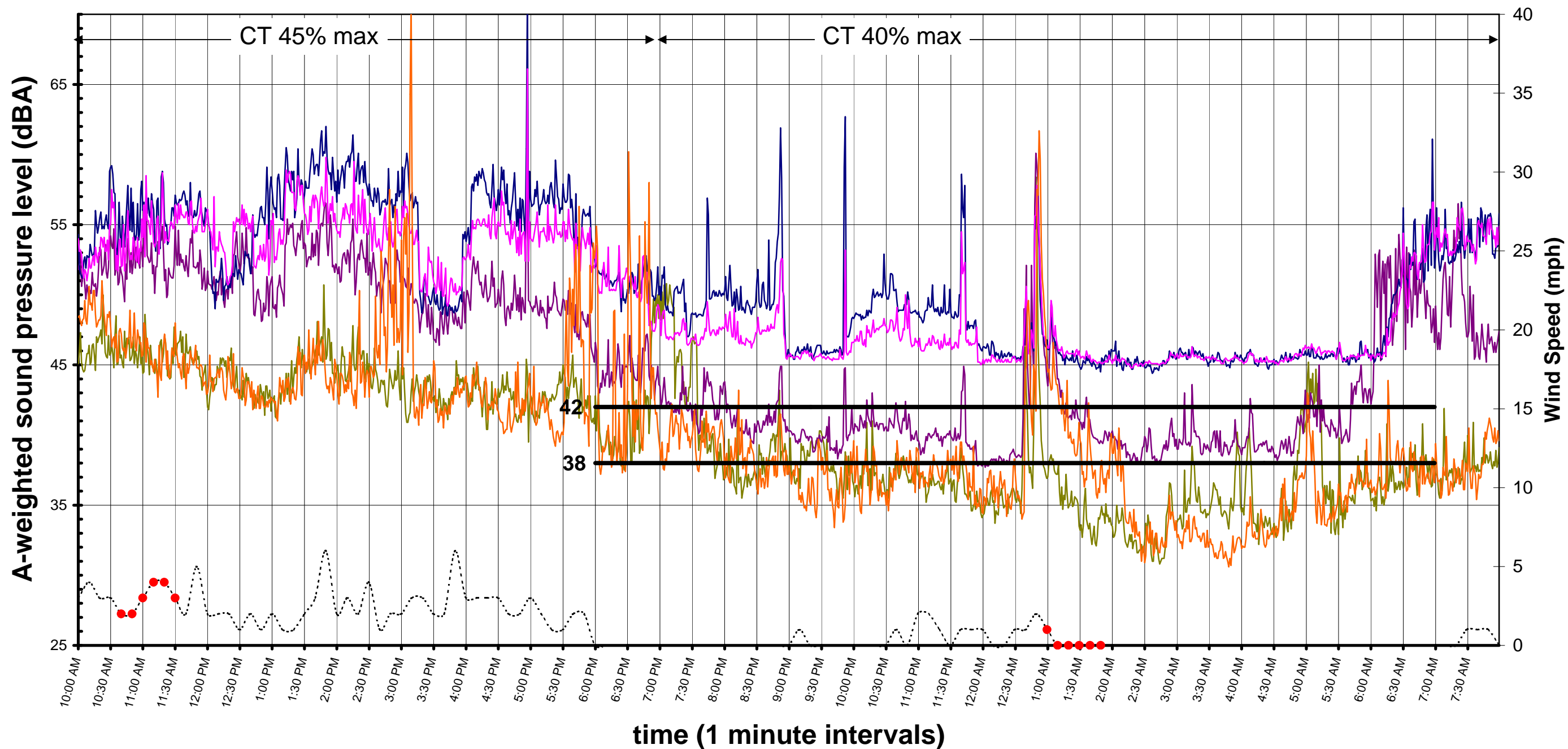
July 24, 2009 - July 25, 2009



- R0/R4 - 48 Old Mill Rd.
- R2 - Overlooking Cold Spring Creek, perpendicular to VOC equipment
- 42 dBA Criterion
- - - - Wind Speed
- R1 - Behind back pasture (off riding trail, overlooking Cold Spring Creek)
- R3 - Overlooking Cold Spring Creek, perpendicular to Cooling towers
- 38 dBA Criterion
- Precipitation

Evergreen Solar - A-weight sound pressure levels (L90)

July 24, 2009 - July 25, 2009

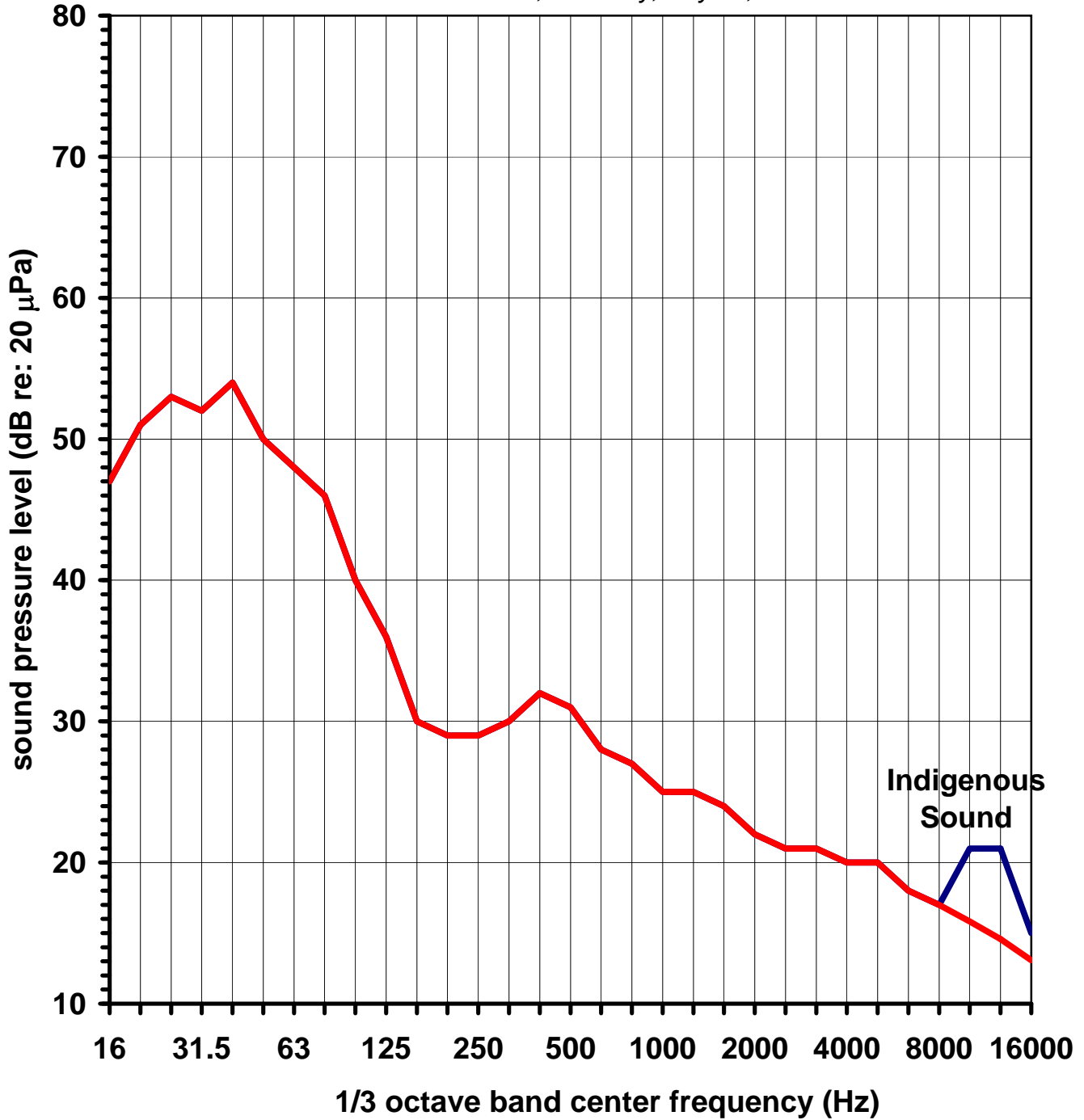


- R0/R4 - 48 Old Mill Rd.
- R2 - Overlooking Cold Spring Creek, perpendicular to VOC equipment
- R11 - Apple Orchard
- 38 dBA Criterion
- Precipitation
- R1 - Behind back pasture (off riding trail, overlooking Cold Spring Creek)
- R3 - Overlooking Cold Spring Creek, perpendicular to Cooling towers
- 42 dBA Criterion
- - - - Wind Speed

Evergreen Solar - sound pressure levels (L90)

Dunroven Farm (Monitor Location R1)

2:15 AM to 2:35 AM, Saturday, July 25, 2009



— Dunroven Farm (38 dBA)

— Dunroven Farm (indigenous sound removed) (38 dBA)

Evergreen Solar - sound pressure levels (L90)

Dunroven Farm (Monitor Location R1)
2:15 AM to 2:35 AM, Saturday, July 25, 2009

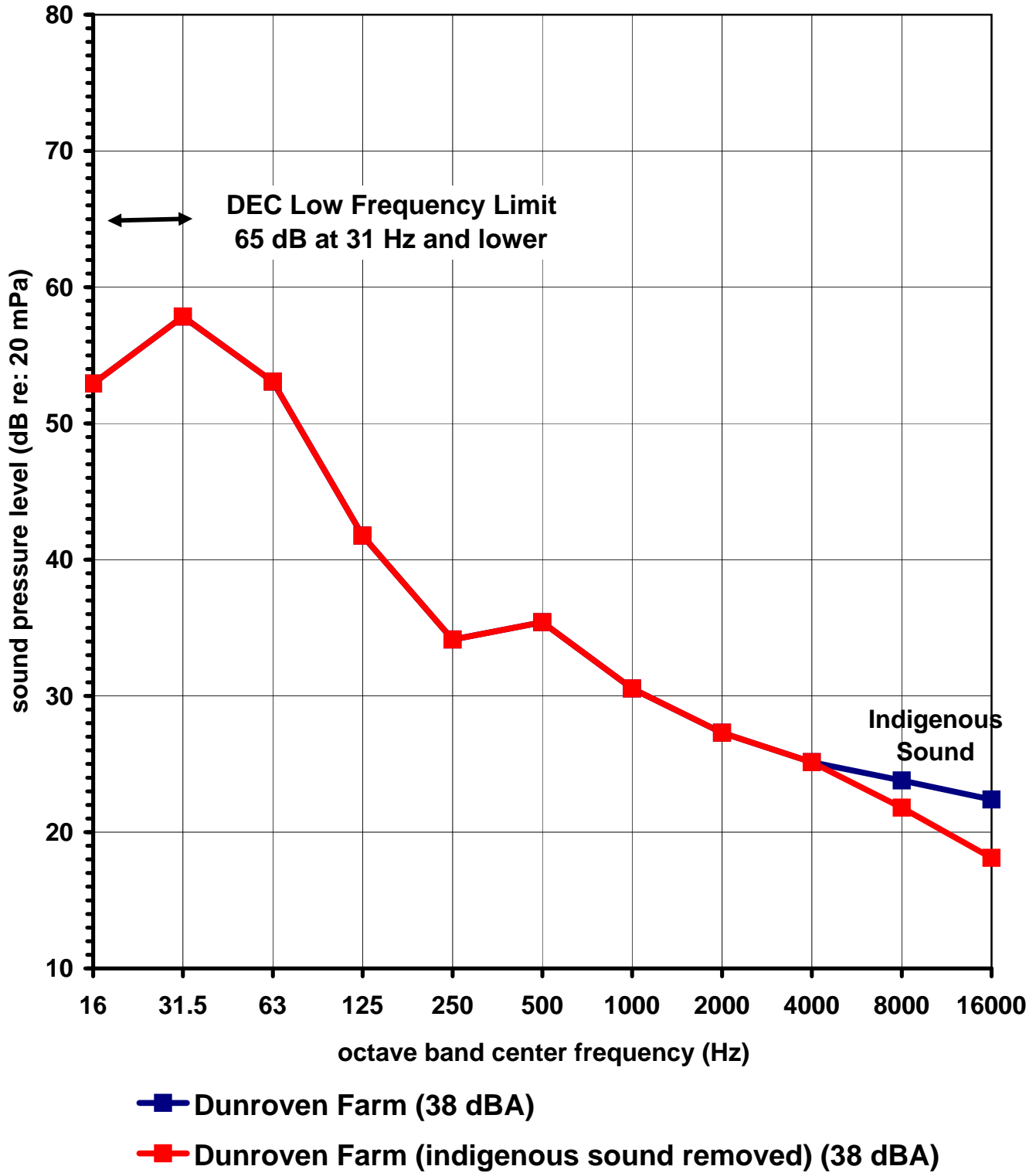


Figure 2

Evergreen Solar

**L₉₀ Sound Levels
Measured Between
2:15 AM and 4:12 AM,
Saturday, July 25, 2009**

31 dBA • Monitor R11

○ Monitor R5

● Monitor R15
38 dBA

45 dBA ● Monitor R2

45 dBA ● Monitor R3

38 dBA ● Monitor R1

33 dBA

33 dBA

Nearest Residential Property

Evergreen Property Reference Locations

2007 EIR Monitoring Location

35 dBA ●

34 dBA ● Monitor R0/R4

1625 ft

42°32'24.61" N 71°34'36.35" W

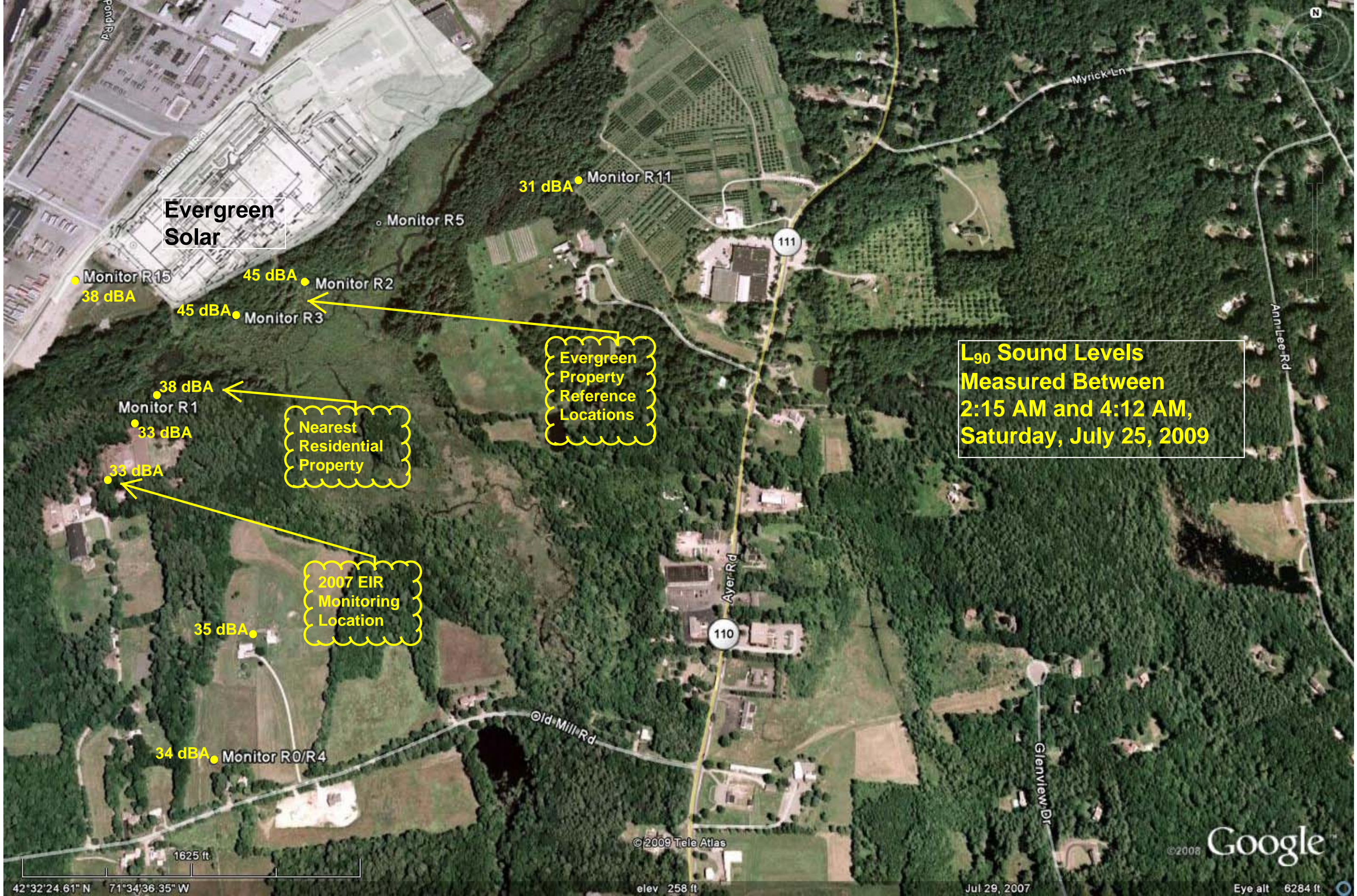
© 2009 Tele Atlas

elev 258 ft

Jul 29, 2007

© 2008 Google

Eye alt 6284 ft



Observations

1. Facility sound is substantially constant except for cooling tower sound.
2. Most often, ambient sound interferes with measurement of facility sound in the community.
3. Cooling Tower operation is the only variable feature of facility equipment operation.
4. On July 25, with noise controls not yet fully implemented, the 38-dBA design goal was achieved.