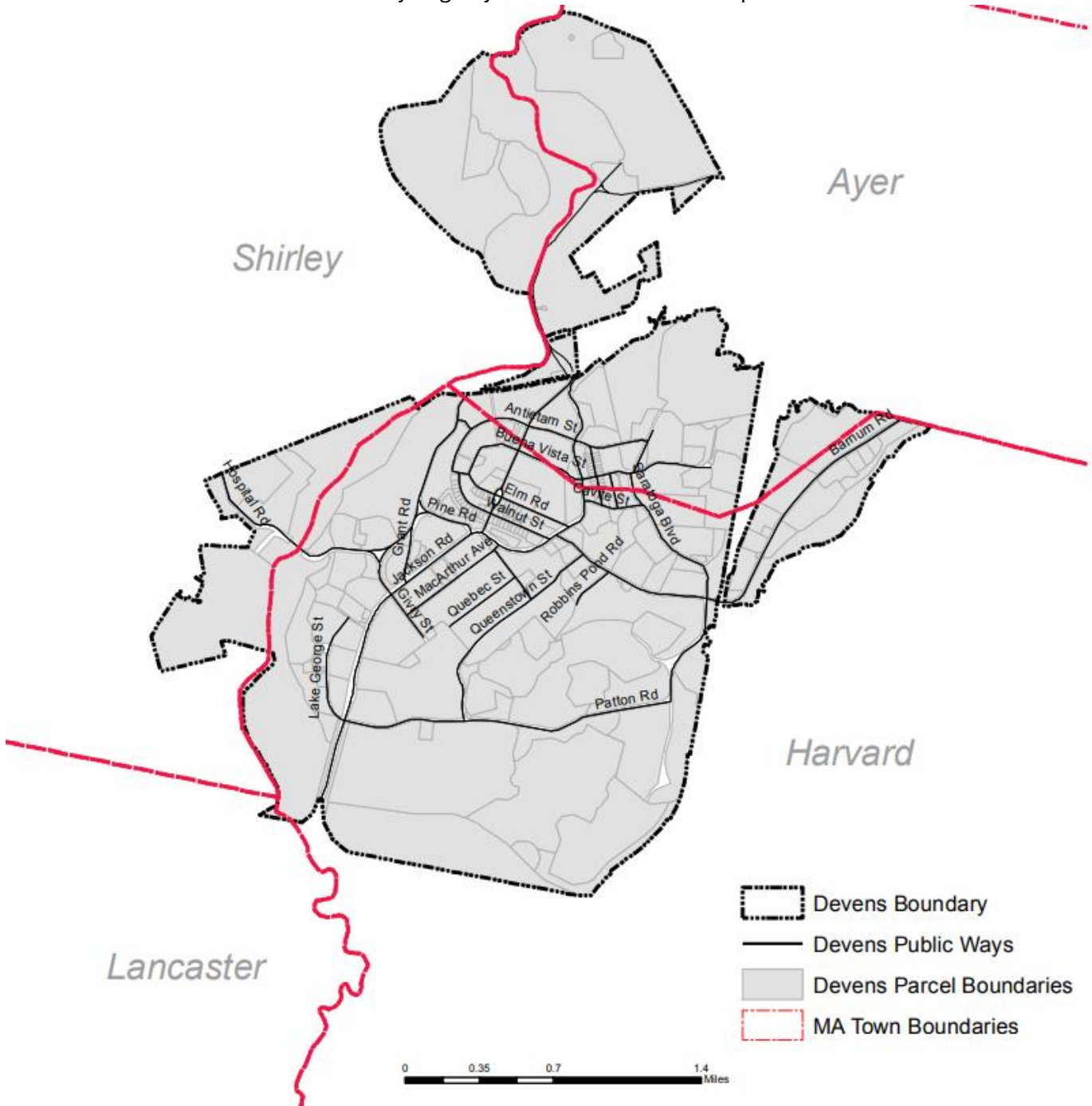


DJFC Matrix – Devens Status Quo: Boundaries*

The Devens Regional Enterprise Zone boundary was created under Section 8 of Chapter 498 of the Acts of 1993. MassDevelopment created the boundary based on the Reuse Plan that was approved by the Board of Selectman in each town and filed with the Secretary, the House and Senate Committees on Ways and Means and recorded in the Middlesex and the Worcester county Registry of Deeds since it encompasses land in both counties.



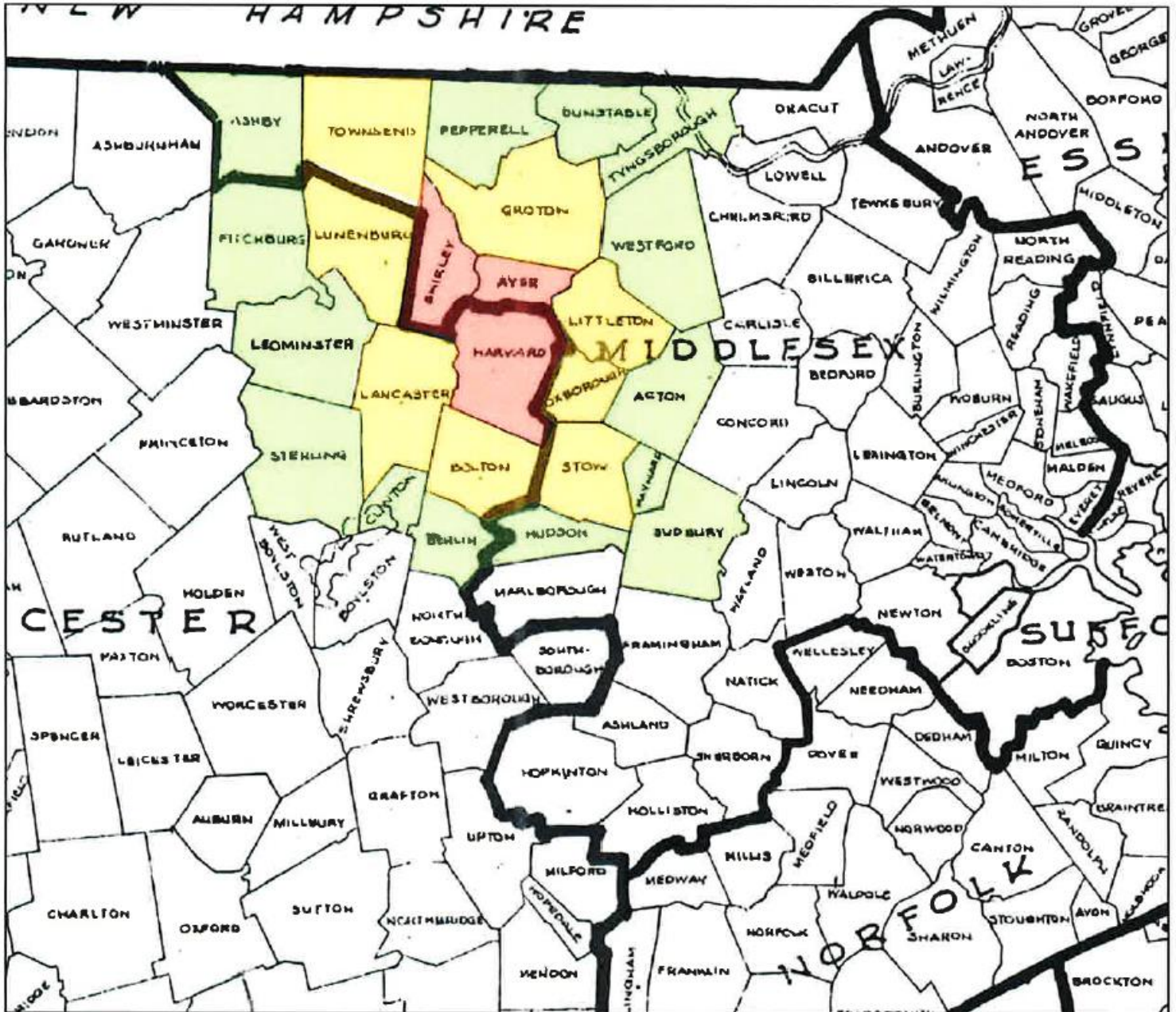
Data Layer Source: Office of Geographic and Environmental Information (MassGIS),
Commonwealth of Massachusetts Executive Office of Environmental Affairs and MassDevelopment Engineering
NAD 1983 State Plane Coordinate System

Prepared by the Devens Enterprise Commission
November 2013

The boundaries include all the land area of former Fort Devens, except the South Post, and certain land adjacent to Fort Devens owned by the Commonwealth, and certain land adjacent to Fort Devens currently owned by the Springfield Railway Terminal, Inc. and currently used primarily for railroad purposes.

Chapter 498 defines the "Devens Region" as Ayer, Harvard, and Shirley and all municipalities contiguous to them, as well as those contiguous to the towns surrounding them:

Devens "Impact Area" per Chapter 498: Ayer, Harvard & Shirley + Adjacent Towns + Adjacent Towns



* This list has not been vetted or reviewed by MassDevelopment. It is important that their input be included in this process to ensure a more complete matrix.